

MORGAN AND MORECAMBE OFFSHORE WIND FARMS: TRANSMISSION ASSETS

Review of Cumulative Effects Assessment and In-Combination Assessment at Deadline 2

Deadline: 2
Application Reference: EN020028

Document Numbers:
MRCNS-J3303-RPS-19094
MOR001-FLO-CON-CAG-RPT-0077

Document Reference: S_D2_10

June 2025
F01

Document status					
Version	Purpose of document	Approved by	Date	Approved by	Date
F01	Deadline 2	HK	June 2025	IM	June 2025

Prepared by:

RPS

Prepared for:

**Morgan Offshore Wind Limited,
Morecambe Offshore Windfarm Ltd**

Contents

1	REVIEW OF CUMULATIVE EFFECTS ASSESSMENT AND IN-COMBINATION ASSESSMENT	1
1.1	Introduction	1
1.2	Methodology	10
1.2.1	Background	10
1.2.2	Identification of new project information	11
1.2.3	Topic screening of new project information	12
1.2.4	Review of cumulative effects assessment	16
1.3	Screening of the Transmission Assets cumulative effects review	17
1.3.1	Summary of CEA and in-combination assessment conclusions as presented within the ES/ISAA	17
1.3.2	CEA Screening Matrix	20
1.4	Review of the Transmission Assets CEA	71
1.5	Conclusions	86
1.6	References	87

Tables

Table 1.1:	Offshore Projects reviewed for potential cumulative effects, with status at application and at Deadline 2 (D2) and programme detail	3
Table 1.2:	Onshore Projects reviewed for potential cumulative effects, with status at application and at Deadline 2 (D2) and programme detail	4
Table 1.3:	Summary of Transmission Assets CEA and in-combination assessment conclusions for Scenario 4 as presented within the Environmental Statement/ISAA	17
Table 1.4:	Screening criteria (based on Volume 1, Annex 5.5: Cumulative effects screening matrix and location plan (REP1-020))	20
Table 1.5:	Summary of the offshore topic specific screening changes made since the submission of the ES based upon updates made to, and new projects added to the CEA longlist	21
Table 1.6:	Summary of the onshore topic specific screening changes made since the submission of the ES based upon updates made to, and new projects added to the CEA longlist	33
Table 1.7:	Review of the project updates that may affect cumulative effects assessment in the Transmission Assets Environmental Statement	71

Figures

Figure 1.1:	Flow chart for CEA screening process (new projects)	14
Figure 1.2:	Flow chart for CEA screening process (updated projects)	15

Glossary

Term	Meaning
Applicants	Morgan Offshore Wind Limited (Morgan OWL) and Morecambe Offshore Windfarm Ltd (Morecambe OWL).
Benthic Ecology	Benthic ecology encompasses the study of the organisms living in and on the sea floor, the interactions between them and impacts on the surrounding environment.
Cumulative effects	The combined effect of the Transmission Assets in combination with the effects from other proposed developments, on the same receptor or resource.
Development Consent Order	An order made under the Planning Act 2008, as amended, granting development consent.
Effect	The term used to express the consequence of an impact. The significance of effect is determined by correlating magnitude of the impact with the importance, or sensitivity, of the receptor or resource in accordance with defined significance criteria.
Environmental Impact Assessment	The process of identifying and assessing the significant effects likely to arise from a project. This requires consideration of the likely changes to the environment, where these arise as a consequence of a project, through comparison with the existing and projected future baseline conditions.
Environmental Statement	The document presenting the results of the Environmental Impact Assessment process.
Expert Working Group	A forum for targeted engagement with regulators and interested stakeholders through the Evidence Plan process.
Generation Assets	The generation assets associated with the Morgan Offshore Wind Project and the Morecambe Offshore Windfarm include the offshore wind turbines, inter-array cables, offshore substation platforms and platform link (interconnector) cables to connect offshore substations.
Marine licence	The Marine and Coastal Access Act 2009 requires a marine licence to be obtained for licensable marine activities. Section 149A of the Planning Act 2008 allows an applicant for to apply for 'deemed marine licences' in English waters as part of the development consent process.
Maximum Design Scenario	The realistic worst-case scenario, selected on a topic-specific and impact specific basis, from a range of potential parameters for the Transmission Assets.
Morecambe Offshore Windfarm: Generation Assets	The offshore generation assets and associated activities for the Morecambe Offshore Windfarm.
Morecambe OWL	Morecambe Offshore Windfarm Limited is a joint venture between Zero-E Offshore Wind S.L.U. (Spain) (a Cobra group company) (Cobra) and Flotation Energy Ltd.
Morgan and Morecambe Offshore Wind Farms: Transmission Assets	The offshore and onshore infrastructure connecting the Morgan Offshore Wind Project and the Morecambe Offshore Windfarm to the national grid. This includes the offshore export cables, landfall site, onshore export cables, onshore substations, 400 kV grid connection cables and associated grid connection infrastructure such as circuit breaker compounds. Also referred to in this report as the Transmission Assets, for ease of reading.
Morgan Offshore Wind Project: Generation Assets	The offshore generation assets and associated activities for the Morgan Offshore Wind Project.
Morgan OWL	Morgan Offshore Wind Limited is a joint venture between bp Alternative Energy investments Ltd. and Energie Baden-Württemberg AG (EnBW).
Scoping Opinion	Sets out the Planning Inspectorate's response (on behalf of the Secretary of State) to the Scoping Report prepared by the Applicants. The Scoping Opinion contains the range of issues that

Term	Meaning
	the Planning Inspectorate, in consultation with statutory stakeholders, has identified should be considered within the Environmental Impact Assessment process.
Scoping Report	A report setting out the proposed scope of the Environmental Impact Assessment process. The Transmission Assets Scoping Report was submitted to The Planning Inspectorate (on behalf of the Secretary of State) for the Morgan and Morecambe Offshore Windfarms Transmission Assets in October 2022.
Transmission Assets	See Morgan and Morecambe Offshore Wind Farms: Transmission Assets (above).

Acronyms

Acronym	Meaning
CCP	Carbon Capture Project
CCS	Carbon Capture Storage
CEA	Cumulative Effects Assessment
COLREGs	International regulations for preventing collisions at sea 1972
CRNRA	Cumulative Regional Navigational Risk Assessment
DCO	Development Consent Order
EIA	Environmental Impact Assessment
EMF	Electromagnetic fields
ERCoP	Emergency Response and Cooperation Plan
EVMP	Environmental Vessel Management Plan
EWG	Expert Working Group
GVA	Gross Value Added
ISAA	Information to Support an Appropriate Assessment
MDS	Maximum Design Scenario
MMMP	Marine Mammal Mitigation Protocol
MU	Management Unit
NSIP	Nationally Significant Infrastructure Project
NtM	Notice to Mariners
SLVR	Seascape, Landscape and Visual Resources
SOLAS	Safety of Life at Sea
SPA	Special Protection Area
SSC	Suspended Sediment Concentrations
UKC	Under Keel Clearance
UXO	Unexploded Ordnance

Units

Unit	Description
m	Metre
MW	Megawatt
m ²	Square metre
km	Kilometre
km ²	Square kilometre
kg	Kilogram
%	percentage

1 Review of Cumulative Effects Assessment and in-combination Assessment

1.1 Introduction

- 1.1.1.1 Morgan Offshore Wind Limited (Morgan OWL) and Morecambe Offshore Windfarm Ltd (Morecambe OWL) (hereafter referred to as ‘the Applicants’) submitted a Development Consent Order (DCO) application for the Morgan and Morecambe Offshore Wind Farms: Transmission Assets (hereafter referred to as the ‘Transmission Assets’) in October 2024. The DCO application included an Environmental Statement, which presented the results of the Environmental Impact Assessment (EIA), encompassing a Cumulative Effects Assessment (CEA) (as presented within the topic specific chapters of Volumes 2 through 4 of the Environmental Statement (APP-042 to APP-144)). The DCO application also included the Information to Support an Appropriate Assessment (ISAA) which encompassed an in-combination assessment (APP-015, APP-016 and APP-017).
- 1.1.1.2 The CEA identified those projects, plans or activities with which the Transmission Assets may interact to produce a cumulative effect. Information on other projects, plans or activities which were publicly available (as described in Volume 1, Chapter 5: Environmental impact assessment methodology (APP-012)) were considered in the CEA and in-combination assessment.
- 1.1.1.3 Since the submission of the application, new projects not previously considered in the CEA have entered the public domain, and new or updated assessment material has been published on projects that had been considered in the CEA. This document presents a review of the following:
- New project information published up to 22 May 2025. For new projects (information for which was not available at the time of completing the CEA for the application), the Applicants have carried out CEA screening in line with Volume 1, Annex 5.5: Cumulative screening matrix and location plan (REP1-020) and considered whether there is potential for additional cumulative effects to arise in order to inform whether these projects are screened into or out of the CEA review.
 - Updated project information published up to 22 May 2025. For those projects already considered in the CEA at application, the Applicants have carried out a review to determine whether the updated information could change the conclusions of the assessment presented in the application.
- 1.1.1.4 This aligns with the CEA guidance published by the Planning Inspectorate in September 2024 which states that: ‘*Further assessment may be required during the examination stage for any newly identified ‘other existing development and, or approved development’ with potential to give rise to significant effects*’ (The Planning Inspectorate,

2024). If there is no potential for significant effects to arise, no further assessment has been undertaken.

- 1.1.1.5 This document considers the projects for which new or updated information is available and whether this new or updated information requires any updates to the cumulative assessments for each topic chapter (see **Table 1.1** and **Table 1.2** for details of which projects were considered in the CEA presented in the application, and which are new since the submission of the application).

Table 1.1: Offshore Projects reviewed for potential cumulative effects, with status at application and at Deadline 2 (D2) and programme detail

Project	Capacity/ scale/ description	Status at application	Status at Deadline 2	Tier at D2	Construction period	Operation period	Distance to Transmission Assets (km)
Mooir Vannin Lease Area	Proposed offshore wind farm comprising up to 100 wind turbines.	Pre-application	Submitted but not yet accepted	2	TBC [2030-2032]	2033-	2.59
Liverpool Bay Area 457 - Westminster Gravels Aggregate Extraction Licence	Westminster Gravels will be renewing their aggregate extraction licence in Area 457 in Liverpool Bay. Their Environmental Statement is planned to be submitted in 2024.	Pre-application	Submitted but not yet determined	1	N/A	Unknown	2.43
Eni Hynet – Carbon Capture Project	CCS project in the east Irish Sea. Works will include installation of a new cable, a new Douglas CCS platform and work on the existing Hamilton, Hamilton North and Lennox wellhead platforms.	Pre-application	Submitted but not yet determined	1	2026-	Unknown	5.74
Isle of Man Interconnector 2	A new 70 MW to 100 MW HVAC interconnector to be deployed by 2030 between Pulrose substation and northwest England Distribution network.	Pre-application	Pre-application	3	2025-2029	Unknown	N/A
Millom East Assets	The Millom East Cables and pipelines grouped together.	Operational - Decommissioning	Operational - Decommissioning	1	N/A	N/A	0-0.5
MaresConnect Interconnector surveys	MaresConnect Interconnector Seabed Survey, which will consist of geophysical, geotechnical and environmental surveys operating between March 2024 and December 2025.	N/A	Operational	1	N/A	2024-2026	40.34

Table 1.2: Onshore Projects reviewed for potential cumulative effects, with status at application and at Deadline 2 (D2) and programme detail

Project	Status at application	Status at Deadline 2	Tier at D2	Construction period	Operation period	Distance to Transmission Assets (km)
39no. dwellings and 16no. maisonettes with associated infrastructure and vehicle accesses onto Blackpool Road	Pending	Permitted	1	Unknown (assumed overlap with Transmission Assets)	Unknown	5.73
Erection of 70no. market and affordable dwellings with associated access, pumping station and open space following demolition of the existing buildings	Pending	Permitted	1	Unknown (assumed overlap with Transmission Assets)	Unknown	6.65
Erection of part 4, 5 & 6 storey building comprising of 40 self-contained apartments with associated cycle/waste storage, and provision of 45 car parking spaces with access from Harrowside West, following demolition of existing hotel (Outline application for access, appearance, layout and scale).	Pending	Permitted	1	Unknown (assumed overlap with Transmission Assets)	Unknown	0.80
Approval of details reserved by condition 6 (e) of permission LCC/2014/0096 relating to the time scale for restoration following the decommissioning of the two PNR shale gas exploration wells and removal of pressure guages	Pending	Permitted	1	Unknown (assumed overlap with Transmission Assets)	Unknown	2.19

Project	Status at application	Status at Deadline 2	Tier at D2	Construction period	Operation period	Distance to Transmission Assets (km)
The proposed development is anticipated to be an 8.6 MW green hydrogen facility with a Proton Exchange Membrane (PEM) electrolyser for the production of hydrogen including hydrogen storage, hydrogen delivery infrastructure to the brewery and hydrogen-powered vehicle refuelling facilities.	Pending	Permitted	1	Unknown (assumed overlap with Transmission Assets)	Unknown	8.82
Request for a Screening Opinion pursuant to Regulation 6 of the Town and Country Planning (Environmental Impact Assessment) (England) Regulations 2017 for proposed development of 1no. 9 storey and 1no. 10 storey building and change of use of the former Park Hotel and no.8 East Cliff to provide up to 440no. residential apartments, gym, co-working and café space.	Pending	EIA not required	1	Unknown (assumed overlap with Transmission Assets)	Unknown	3.07

Project	Status at application	Status at Deadline 2	Tier at D2	Construction period	Operation period	Distance to Transmission Assets (km)
10no. commercial units for a mix use of Commercial, Business and Service (Class E) General industrial (Class B2) and Storage or distribution (Class B8) (pursuant to 06/2020/0941 to seek variation of condition no.1, 3, 4, 5, 6 ,7, 8, 9, 10, 11, 12, 16, and 17)	Pending	Permitted	1	Unknown (assumed overlap with Transmission Assets)	Unknown	5.04
49no. two storey affordable homes, estate road with access from Lightfoot Lane, adoptable footway along the site frontage to Lightfoot Lane with new pedestrian footpath links to the existing footpath between 15 and 17 Oakwood Drive and to the roundabout at the junction of Tabley Lane and Tyneham Way, along with ancillary works including laying out of open space and retention of the existing on-site pond	Pending	Permitted	1	Unknown (assumed overlap with Transmission Assets)	Unknown	3.57
Installation of a ground mounted solar array, including construction of a high voltage transformer station, gravel access roads and a 2m perimeter mesh fence.	Pending	Permitted	1	Unknown (assumed overlap with Transmission Assets)	Unknown	5.15

Project	Status at application	Status at Deadline 2	Tier at D2	Construction period	Operation period	Distance to Transmission Assets (km)
Outline application for a six-storey building comprising 19no. residential apartments and ground floor commercial unit, following demolition of existing building	Pending	Permitted	1	Unknown (assumed overlap with Transmission Assets)	Unknown	3.35
Screening opinion for proposed development of 186 dwellings including land reserved for a primary school and associated access, open space and landscaping	Pending	EIA not required	1	Unknown (assumed overlap with Transmission Assets)	Unknown	8.14
Consultation from Lancashire County Council regarding an application for Outline Planning Permission (with all matters reserved save for access from the public highway to Development Zones A, B and D (M65 Terminus Roundabout, A49 Wigan Road and Stanifield Lane) and strategic green infrastructure/landscaping) for a mixed-use development.	Pending	No objections	1	Unknown (assumed overlap with Transmission Assets)	Unknown	6.45
Environmental Impact Assessment (EIA) Screening Opinion for proposed replacement Wind Turbine on Land Adjacent to Southport Eco Centre.	Pending	EIA not required	1	Unknown (assumed overlap with Transmission Assets)	Unknown	12.23

Project	Status at application	Status at Deadline 2	Tier at D2	Construction period	Operation period	Distance to Transmission Assets (km)
Request for a screening opinion Pursuant to Regulation 6 of the Town and Country Planning (Environmental Impact Assessment) (England) Regulations 2017 for proposed development of a Motorway Services Area	Pending	EIA not required	1	Unknown (assumed overlap with Transmission Assets)	Unknown	4.25
Request for a screening opinion Pursuant to Regulation 6 of the Town and Country Planning (Environmental Impact Assessment) (England) Regulations 2017 for proposed development of up to 380 residential units with means of access to the public highway	Pending	EIA not required	1	Unknown (assumed overlap with Transmission Assets)	Unknown	4.20
Request for screening opinion pursuant to the town and country planning environmental impact assessment regulations 2017 in respect of a residential development project at land north and south of old house lane in Westby (the Marton estate)	Pending	EIA not required	1	Unknown (assumed overlap with Transmission Assets)	Unknown	1.97

Project	Status at application	Status at Deadline 2	Tier at D2	Construction period	Operation period	Distance to Transmission Assets (km)
Request for screening opinion for the repowering of the Royal Seaforth Dock wind turbines at Maritime Centre, Bootle Maritime Centre Royal Seaforth Dock Seaforth L21 1LA	Pending	EIA required	1	Unknown (assumed overlap with Transmission Assets)	Unknown	31.84
Request for a screening opinion Pursuant to Regulation 6 of the Town and Country Planning (Environmental Impact Assessment) (England) Regulations 2017 for proposed Battery Energy Storage System	Pending	EIA not required	1	Unknown (assumed overlap with Transmission Assets)	Unknown	9.36
Request for a screening opinion for proposed development of a Motorway Services Area	Pending	EIA not required	1	Unknown (assumed overlap with Transmission Assets)	Unknown	4.18
Request for a screening opinion for proposed Office Development	Pending	EIA not required	1	Unknown (assumed overlap with Transmission Assets)	Unknown	3.18
Request for a screening opinion for proposed development for erection of 164no. dwellings with associated works including landscaping and access	Pending	EIA not required	1	Unknown (assumed overlap with Transmission Assets)	Unknown	3.80

1.2 Methodology

1.2.1 Background

- 1.2.1.1 This document has been prepared to supplement the CEA undertaken for the Transmission Assets within the topic specific chapters in Volume 2, 3 and 4 of the Environmental Statement (APP-042 to APP-144) (hereafter referred to as ‘the Transmission Assets CEA’).
- 1.2.1.2 The CEA methodology is described in full in Volume 1, Chapter 5: Environmental Impact Assessment methodology (APP-034). The methodology was developed in accordance with the following guidance:
- The Planning Inspectorate’s Advice Note Seventeen, version 2 (Planning Inspectorate, 2019); and
 - Cumulative Impacts Assessment Guidelines: Guiding Principles for Cumulative Impacts Assessment in Offshore Wind Farms (RenewableUK, 2013).
- 1.2.1.3 For a cumulative effect to occur, there must be an impact-receptor-pathway, which includes conceptual overlap, physical overlap, and temporal overlap. The screening criteria used to identify an impact-receptor-pathway is described in Volume 1, Chapter 5: Environmental Impact Assessment methodology (APP-034) and Volume 1, Annex 5.5: Cumulative effects screening matrix and location plan (REP1-020).
- 1.2.1.4 The following CEA scenarios have been considered, where relevant for the Transmission Assets CEA.
- Scenario 1: Assessment of the Transmission Assets together with the Morecambe Offshore Windfarm: Generation Assets.
 - Scenario 2: Assessment of the Transmission Assets together with the Morgan Offshore Wind Project: Generation Assets.
 - Scenario 3: Assessment of the Transmission Assets together with both the Morgan Offshore Wind Project: Generation Assets and Morecambe Offshore Windfarm: Generation Assets (the Generation Assets).
 - Scenario 4: Assessment of Scenario 3 and all other relevant projects and plans.
- 1.2.1.5 Scenario 4 includes the cumulative assessment Scenario 3 (Transmission Assets and Generation Assets) together with all other relevant screened-in projects from the cumulative effects assessment long list.
- Scenario 4a: Scenario 3 (Transmission Assets and Generation Assets) and Tier 1 projects, plans and activities which are:
 - under construction;
 - permitted application;
 - submitted application; or

- those currently operational that were not operational when baseline data were collected, and/or those that are operational but have an ongoing impact.
- Scenario 4b: Scenario 4a plus Tier 2 projects, plans and activities for which a:
 - scoping report has been submitted in the public domain.
- Scenario 4c: Scenario 4b plus Tier 3 projects, plans and activities which are:
 - where a scoping report has not been submitted but some information is within the public domain;
 - identified in the relevant Development Plan; or
 - identified in other plans and programmes.

1.2.1.6 Since submission of the Transmission Assets application, some of the projects considered in the CEA have moved from a lower tier to a higher tier, as described in **paragraph 1.2.2.2**.

1.2.2 Identification of new project information

1.2.2.1 An update to the CEA long list (presented within Volume 1, Annex 5.5: Cumulative effects screening matrix and location plan (REP1-020)) has been completed based on information made publicly available on project or government websites. This update includes changes to existing projects on the long list as well as additional projects identified after the submission of the DCO Application in October 2024.

1.2.2.2 Each project that has been identified as having published substantial assessment material since the Transmission Assets CEA was produced was taken forward to the screening stage below. Substantial assessment material includes:

- Projects which have progressed further along the consenting process meaning that they have moved from a lower tier to a higher tier;
- Projects where the status of the project changed, for example from submitted to consented;
- New projects not considered in the Transmission Assets CEA which have been identified in the long list screening process; and
- Other new information that has become available that could potentially lead to a change in the assessment conclusions of the Transmission Assets CEA.

1.2.2.3 Minor updates to existing projects which did not constitute substantial assessment material (for example, updates to project names, project developers, completion of site investigation surveys where no new information was made available, etc.) have not been considered.

1.2.3 Topic screening of new project information

1.2.3.1 New or updated project information (identified in **section 1.2.2**) has been screened on a topic-by-topic basis to identify projects to be taken forward for the CEA review as described in **section 1.2.4**.

1.2.3.2 The screening process for new projects is outlined in **Figure 1.1** and described below:

- New projects are identified through review of the updated CEA long list which can be found within Volume 1, Annex 5.5: Cumulative effects screening matrix and location plan (REP1-020).
- Information was screened to identify whether there is spatial overlap between the project and the Transmission Assets CEA study area for each topic (i.e. a physical effect-receptor pathway). The CEA study areas are defined as described in each topic chapter. Projects beyond the CEA study areas were screened out of the CEA review.
- The screening considered whether the new project information was relevant to the assessment for that topic, considering the criteria in **Table 1.4** (and in accordance with the criteria set out in Volume 1, Annex 5.5: Cumulative effects screening matrix and location plan (REP1-020)). Where a cumulative effect exists, projects were screened into the CEA review.
- The screening considered whether the new project information could lead to an increase in the impacts assessed for each topic compared to that which has been assessed in the Transmission Assets CEA
- Where is potential for a significant effect, the CEA is then reviewed considering the new project information and updated, if appropriate.

1.2.3.3 The screening process for updated projects is outlined in within Volume 1, Annex 5.5: Cumulative effects screening matrix and location plan (REP1-020) and **Figure 1.2** is described below:

- Updated projects are identified through review of the updated CEA long list.
- The screening considered whether the updated project information was relevant to the assessment for that topic, considering the criteria in **Table 1.3** (and in accordance with the criteria set out in Volume 1, Annex 5.5: Cumulative effects screening matrix and location plan (REP1-020)).
- The updated information was reviewed to determine if this could result in any change to the cumulative maximum design scenario (MDS) for each impact compared to that assessed in the Transmission Assets CEA. Projects which have no potential to result in any change were screened out of the CEA review.
- Where a change was identified, the screening considered whether the change could lead to an increase in the impacts assessed for each topic compared to that assessed in the Transmission Assets CEA. Where there is potential for an increase in potential effects, a sensitivity analysis was carried out to consider if the updated

information could alter the conclusions of the CEA and in-combination assessment presented in the application. The projects that have been reviewed for potential cumulative effects are listed in **Table 1.1** and **Table 1.2**.

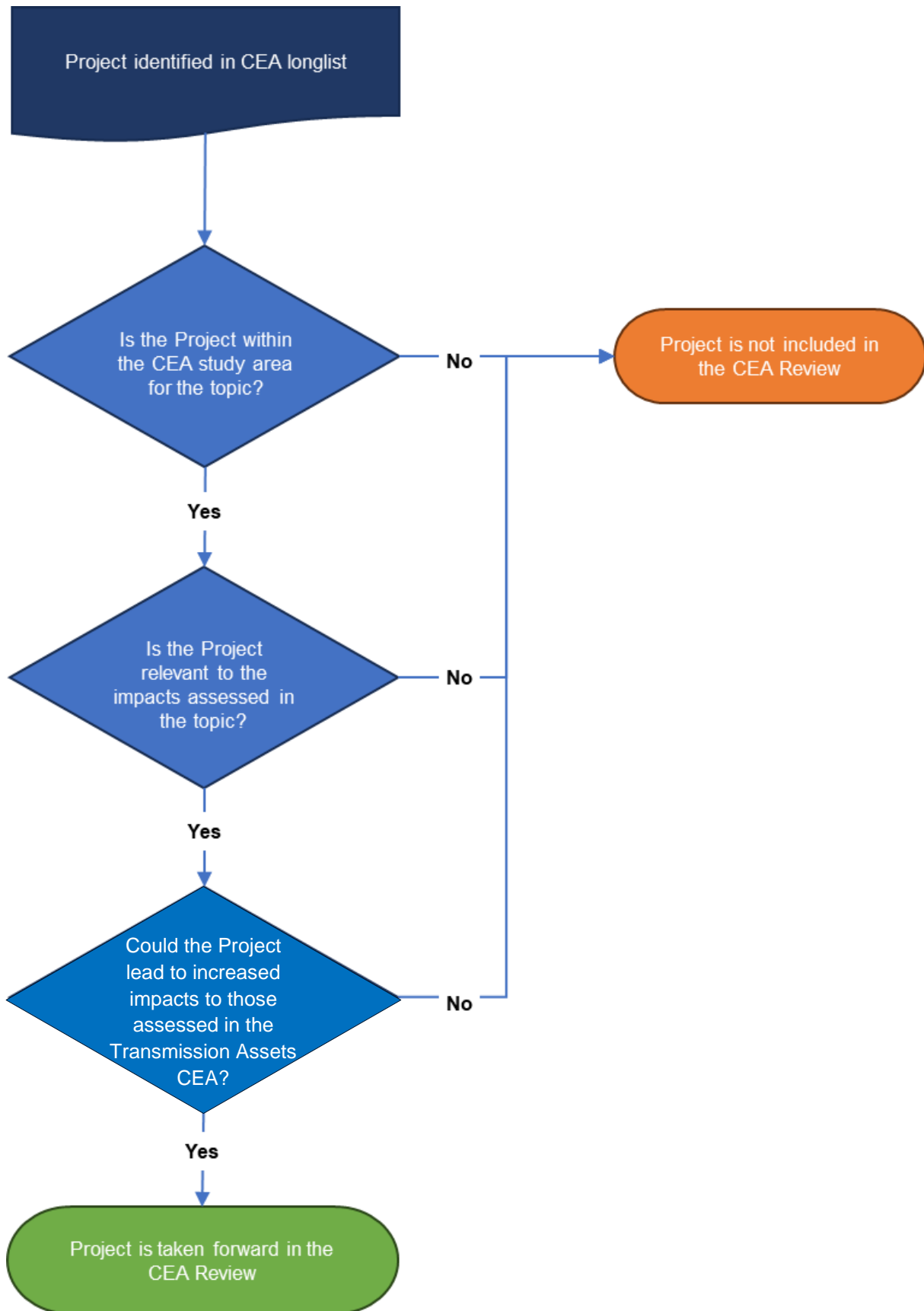


Figure 1.1: Flow chart for CEA screening process (new projects)

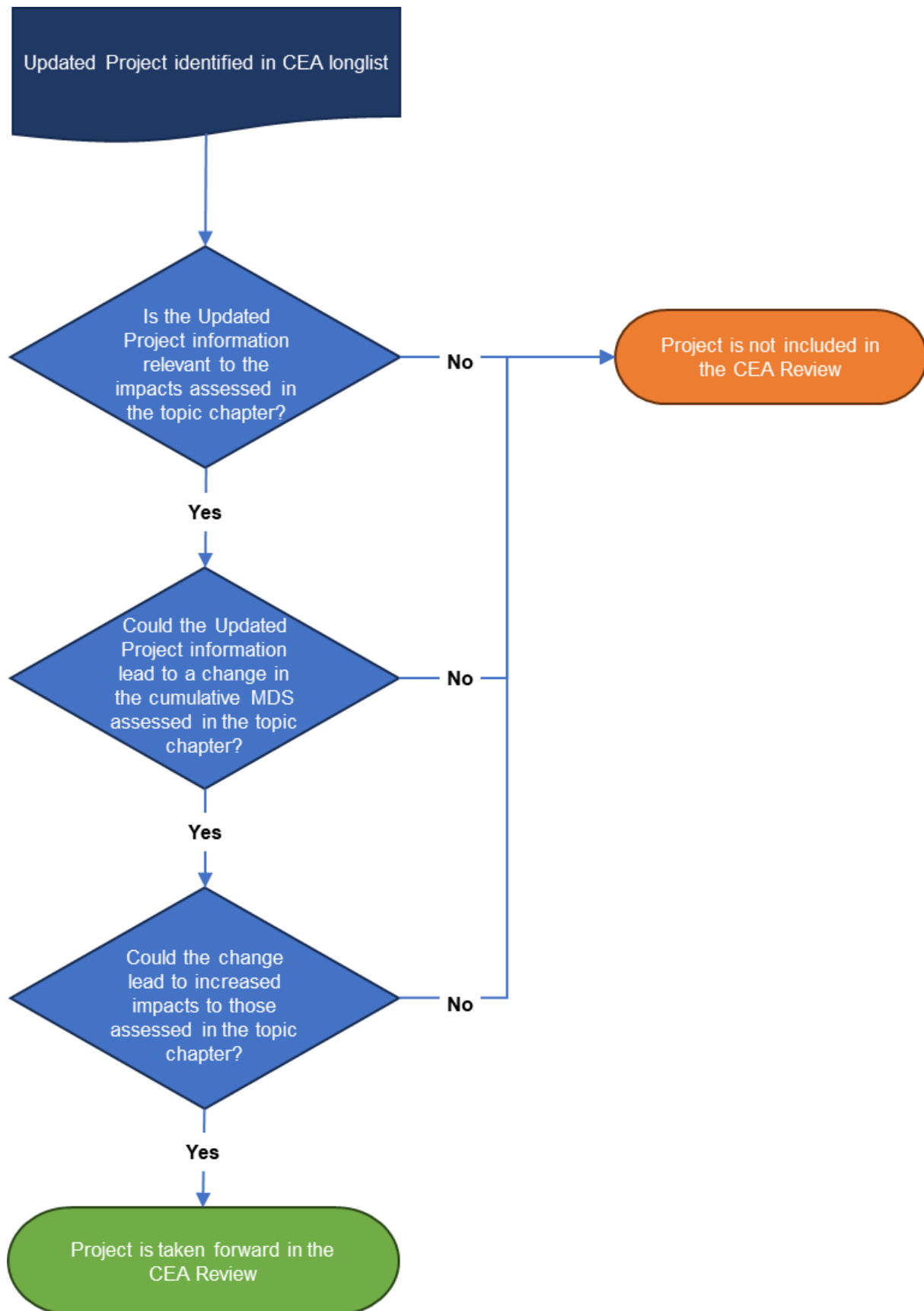


Figure 1.2: Flow chart for CEA screening process (updated projects)

1.2.4 Review of cumulative effects assessment

- 1.2.4.1 A review of the CEA has been undertaken on a topic-by-topic basis and is presented in **section 1.4**. The assessment presented within Volume 4, Chapter 1: Climate change (APP-138) is inherently cumulative as it already considers regional to global impacts, in accordance with IEMA (2022), and therefore this topic was not included in the CEA review.
- 1.2.4.2 A summary of the projects that new information has become available for since the Transmission Assets application was submitted and that have the potential to result in a change to the Transmission Assets CEA are presented in **Table 1.1**.

1.3 Screening of the Transmission Assets cumulative effects review

1.3.1 Summary of CEA and in-combination assessment conclusions as presented within the ES/ISAA

Table 1.3: Summary of Transmission Assets CEA and in-combination assessment conclusions for Scenario 4 as presented within the Environmental Statement/ISAA

Topic	Summary of Transmission Assets CEA and in-combination assessment conclusions for Scenario 4 as presented within the Environmental Statement/ISAA
Volume 2	
Physical processes (Volume 2, Chapter 1(APP-042))	Overall, it is concluded that there will be no significant cumulative effects from the Transmission Assets alongside other projects/plans.
Benthic subtidal and intertidal ecology (Volume 2, Chapter 2 (APP-045))	Overall, it is concluded that there will be significant cumulative effects (moderate adverse) in the short to medium term from temporary habitat disturbance/loss associated with the Transmission Assets alongside the Morgan Offshore Wind Project: Generation Assets and other tier 2 and tier 3 projects. The significance of the cumulative effects is, however, predicted to decrease to minor adverse significance in the long term as the sediments and associated benthic communities will recover over time. Therefore, effects of minor adverse significance are predicted in the long term which is not significant. There will be no significant cumulative effects from the Transmission Assets alongside other projects/plans for any other impact pathway.
Fish and shellfish ecology (Volume 2, Chapter 3 (APP-048))	Overall, it is concluded that there will be no significant cumulative effects from the Transmission Assets alongside other projects/plans.
Marine mammals (Volume 2, Chapter 4 (APP-050))	Overall, it is concluded that for most impacts there will be no significant cumulative effects from the Transmission Assets alongside other projects/plans, except the potential injury from UXO clearance for harbour porpoise, where a potential significant cumulative effect has been identified if high order detonation is required.
Offshore ornithology (Volume 2, Chapter 5 (APP-053))	Overall, it is concluded that there will be no likely significant cumulative effects from the Transmission Assets alongside other projects/plans.
Commercial fisheries (Volume 2, Chapter 6 (APP-054))	Overall, it is concluded there will be no significant cumulative effects on commercial fisheries from the Transmission Assets alongside other projects/plans following the implementation of embedded and further mitigation measures.
Shipping and navigation (Volume 2, Chapter 7 (APP-056))	Overall, it is concluded that there will be three significant cumulative impacts arising from the Transmission Assets alongside other projects. <ul style="list-style-type: none">• Impact to commercial operators including strategic routes and lifeline ferries.

Topic	Summary of Transmission Assets CEA and in-combination assessment conclusions for Scenario 4 as presented within the Environmental Statement/ISAA
	<ul style="list-style-type: none"> Impact to adverse weather routing; and, Impact on vessel to vessel collision risk
Marine archaeology (Volume 2, Chapter 8 (APP-059))	Overall, it is concluded that there will be no significant cumulative effects from the Transmission Assets alongside other projects/plans.
Other sea users (Volume 2, Chapter 9 (APP-061))	Overall, it is concluded that there will be no significant cumulative effects from the Transmission Assets on other sea users alongside other projects/plans.
Volume 3	
Geology, hydrogeology and ground conditions (Volume 3, Chapter 1 (APP-068))	Overall, it is concluded that there will be no significant cumulative effects from the Transmission Assets on geology, hydrogeology and ground conditions alongside other projects/plans.
Hydrology and flood risk (Volume 3, Chapter 2 (APP-070))	Overall, it is concluded that there will be no significant cumulative effects from the Transmission Assets on hydrology and flood risk alongside other projects/plans.
Onshore ecology and nature conservation (Volume 3, Chapter 3 (APP-075))	Overall, it is concluded that there will be significant cumulative effects on onshore ecology and nature conservation: <ul style="list-style-type: none"> Up to moderate adverse impact during construction on Mill Brook Valley Biological Heritage Site. Note, the projects screened into the CEA do not affect the significance of effect presented for the project in isolation for this receptor. Up to moderate adverse impact during construction on priority habitats.
Onshore and intertidal ornithology (Volume 3, Chapter 4 (APP-090))	Overall, it is concluded that there will be no significant cumulative effects from the Transmission Assets on onshore and intertidal ornithology alongside other projects/plans.
Historic environment (Volume 3, Chapter 5 (APP-096))	Overall, it is concluded that there will be no significant cumulative effects from the Transmission Assets on historic environment alongside other projects/plans.
Land use and recreation (Volume 3, Chapter 6 (APP-104))	Overall, it is concluded that there will be significant cumulative effects on land use and recreation: <ul style="list-style-type: none"> Major adverse effect on the permanent loss of BMV land during construction and decommissioning.
Traffic and transport (Volume 3, Chapter 7 (APP-108))	Overall, it is concluded that there will be no significant cumulative effects from the Transmission Assets on traffic and transport alongside other projects/plans.
Noise and vibration (Volume 3, Chapter 8 (APP-117))	Overall, it is concluded that there will be no significant cumulative effects from the Transmission Assets on noise and vibration alongside other projects/plans.

Topic	Summary of Transmission Assets CEA and in-combination assessment conclusions for Scenario 4 as presented within the Environmental Statement/ISAA
Air quality (Volume 3, Chapter 9 (APP-121))	Overall, it is concluded that there will be no significant cumulative effects from the Transmission Assets on air quality alongside other projects/plans.
Landscape and visual resources (Volume 3, Chapter 10 (APP-123))	<p>Overall, it is concluded that there will be significant cumulative effects on landscape and visual resources:</p> <ul style="list-style-type: none"> • Moderate adverse effect during construction, operation and maintenance and decommissioning on landscape characters LCA 16b Mosslands –South Fylde Mosses, LCA 15b Coastal Plain: Longton to Bretherton, LCA 17a Enclosed Coastal Marsh: Clifton and Hutton and LCA 15d Coastal Plain: Fylde. • Major adverse impact during construction on walkers and equestrians using PRoW along the onshore export cable corridor and 400 kV grid connection cable corridor. • Major adverse impact during construction on occupiers of residential dwellings along the onshore export cable corridor and 400 kV grid connection cable corridor.
Aviation and radar (Volume 3, Chapter 11 (APP-130))	Overall, it is concluded that there will be no significant cumulative effects from the Transmission Assets on aviation and radar alongside other projects/plans.
Volume 4	
Climate change (Volume 4, Chapter 1 (APP-138))	Overall, it is concluded that there will be a significant beneficial cumulative effect from the Transmission Assets on climate change alongside other projects/plans.
Socio-economics (Volume 4, Chapter 2 (APP-141))	<p>Overall, it is concluded that there are the following significant cumulative effects from the Transmission Assets alongside other cumulative projects.</p> <p>Construction phase</p> <ul style="list-style-type: none"> • The significance of effect for the potential impact on economic receptors including employment and GVA for Scenario 3 and 4a to 4c for North Wales (offshore study area) are assessed to be moderate (beneficial) which is significant in EIA terms. • The significance of effect for the potential impact on economic receptors including employment and GVA for Scenario 3 for North West England (offshore study area) is assessed to be moderate (beneficial) which is significant in EIA terms. <p>Operation and maintenance phase</p> <ul style="list-style-type: none"> • The significance of effect for the potential impact on economic receptors including employment and GVA for Scenario 4a to 4c for North Wales (offshore study area) is assessed to be major (beneficial) which is significant in EIA terms. • The significance of effect for the potential impact on economic receptors including employment and GVA for Scenario 4a to 4c for North West England (offshore study area) is assessed to be moderate (beneficial) which is significant in EIA terms.

1.3.2 CEA Screening Matrix

1.3.2.1 **Table 1.5** and **Table 1.6** provide the results of the screening exercise carried out to determine if a project is taken forward into the CEA review, as per the process described in **Figure 1.1** and **Figure 1.2**.

1.3.2.2 This screening exercise was carried out following the methodology set out in Volume 1, Annex 5.5: Cumulative effects screening matrix and location plan (REP1-020), adapted for this CEA review, and the criteria in **Table 1.4**, below. The projects which have been screened in have been carried forward into the CEA review presented in **section 1.4**.

Table 1.4: Screening criteria (based on Volume 1, Annex 5.5: Cumulative effects screening matrix and location plan (REP1-020))

Code	Screening criteria
a	Included as part of the topic baseline with no anticipated impacts Not relevant to CEA review
b	Part of the baseline but has an ongoing impact Not relevant to CEA review
c	Potential cumulative effect exists, or change to cumulative effect previous assessed Screened into the CEA review
d	No conceptual or physical effect-receptor pathway Screened out of the CEA review
e	Low data availability Screened out of the CEA review
f	No temporal overlap Screened out of the CEA review
g	Project has been withdrawn from development or operation Screened out of the CEA review

1.3.2.3 **Table 1.5** and **Table 1.6** show all projects either added to, or updated in, the CEA longlist since the DCO Application was submitted. Based on this new information, screening has been reviewed.

- Where new information results in a change to the screening conclusion, the revised screening grade is shown using the codes 'a-g', defined in **Table 1.4**.
- Where new information results in no change to the screening conclusion, whether that be screened in or screened out, this is shown as 'no change'.

1.3.2.4 The full screening of all new and updated projects alongside projects considered in the DCO Application is available in the updated CEA Screening matrix and location plan (Volume 1, Annex 5.5 (REP1-020) submitted at Deadline 1. This includes justification for projects screened out of the CEA longlist.

Table 1.5: Summary of the offshore topic specific screening changes made since the submission of the ES based upon updates made to, and new projects added to the CEA longlist

Updates to Projects	Updates Impact on Topic Specific Screening									
	Physical Processes	Benthic Ecology	Fish and Shellfish Ecology	Marine Mammals	Offshore Ornithology	Commercial Fisheries	Shipping and Navigation	Marine Archaeology	Other Sea Users	Socio Economics
Moor Vannin Lease area	No change	No change	No change	No change	Screen out (d)	No change	No change	No change	No change	No change
Isle of Man UK interconnector 2	No change	No change	No change	No change	Potentially, if the project interacts with the Liverpool Bay Special Protection Area (SPA) during any project phase	No change	No change	No change	Screen in (c)	No change
Liverpool Bay Area 457 - Westminster Gravels Aggregate Extraction Licence	No change	No change	No change	No change	Potentially, if the project interacts with the Liverpool Bay SPA during any project phase	No change	No change	No change	No change	No change
Project Erebus – Floating Offshore Wind Project	No change	No change	No change	No change	No change	No change	No change	No change	No change	No change
North Channel Wind 1	No change	No change	No change	No change	No change	No change	No change	No change	No change	No change
North Channel Wind 2	No change	No change	No change	No change	No change	No change	No change	No change	No change	No change
North Irish Sea Array (NISA) OWF	No change	No change	No change	No change	No change	No change	No change	No change	No change	No change
Twin Hub	No change	No change	No change	No change	No change	No change	No change	No change	No change	No change
Project Saoirse Wave Energy	No change	No change	No change	No change	No change	No change	No change	No change	No change	Screen out (d)
Malin Sea Wind	No change	No change	No change	No change	No change	No change	No change	No change	No change	Screen out (d)

Updates to Projects		Updates Impact on Topic Specific Screening								
Project Name	Physical Processes	Benthic Ecology	Fish and Shellfish Ecology	Marine Mammals	Offshore Ornithology	Commercial Fisheries	Shipping and Navigation	Marine Archaeology	Other Sea Users	Socio Economics
Clarus Floating Offshore Wind Farm	No change	No change	No change	No change	No change	No change	No change	No change	No change	No change
Moor Vannin Transmission Assets	See East Irish Sea Transmission Project	See East Irish Sea Transmission Project	See East Irish Sea Transmission Project	See East Irish Sea Transmission Project	See East Irish Sea Transmission Project	See East Irish Sea Transmission Project	See East Irish Sea Transmission Project	See East Irish Sea Transmission Project	See East Irish Sea Transmission Project	See East Irish Sea Transmission Project
Millom East Assets:	No change	No change	No change	No change	Potentially, if the project interacts with the Liverpool Bay SPA during any project phase	No change	No change	No change	No change	No change
Millom East PLEM										
Millom PLEM										
Millom PLEM to DPPA pipeline										
Millom PLEM to Millom wellhead Q1 pipeline										
Millom PLEM to Millom wellhead Q3 chem pipeline										
Millom PLEM to Millom West pipeline										
Millom wellhead Q1 to Millom PLEM pipeline										
Millom wellhead Q2 to Millom PLEM pipeline										
Millom wellhead Q3 to Millom PLEM pipeline										
Millom West to Millom PLEM pipeline										
Outer Dowsing Offshore Wind Farm	Screen out (d)	Screen out (d)	Screen out (d)	Screen out (d)	No change	Screen out (d)	No change	Screen out (d)	No change	Screen out (d)

Updates to Projects		Updates Impact on Topic Specific Screening								
Project Name	Physical Processes	Benthic Ecology	Fish and Shellfish Ecology	Marine Mammals	Offshore Ornithology	Commercial Fisheries	Shipping and Navigation	Marine Archaeology	Other Sea Users	Socio Economics
Liverpool Bay Area 457 - Westminster Gravels Aggregate Extraction Licence	No change	No change	No change	No change	Potentially, if the project interacts with the Liverpool Bay SPA during any project phase	No change	No change	No change	No change	No change
Five Estuaries – Offshore Wind Farm	No change	No change	No change	No change	No change	No change	No change	No change	No change	Screen out (d)
Green Volt Offshore Wind Farm	No change	No change	No change	No change	No change	No change	No change	No change	No change	No change
Sheringham and Dudgeon Extension Projects	No change	No change	No change	No change	No change	No change	No change	No change	No change	No change
Arklow Bank Wind Park Phase 2	No change	No change	No change	No change	No change	No change	No change	No change	No change	No change
Arranmore offshore wind project	No change	No change	No change	No change	No change	No change	No change	No change	No change	Screen out (d)
Blyth Demo Offshore Wind Farm Phases 2&3	No change	No change	No change	No change	No change	No change	No change	No change	No change	Screen out (d)
Caledonia offshore Wind Project	No change	No change	No change	No change	No change	No change	No change	No change	No change	Screen out (d)
BayWa – Floating Offshore Wind Project	Screen out (d)	No change	No change	Screen out (d).	No change	Screen out (d)	Screen out (d)	Screen out (d)	No change	Screen out (d)

Updates to Projects		Updates Impact on Topic Specific Screening								
Project Name	Physical Processes	Benthic Ecology	Fish and Shellfish Ecology	Marine Mammals	Offshore Ornithology	Commercial Fisheries	Shipping and Navigation	Marine Archaeology	Other Sea Users	Socio Economics
Cailleach Offshore Wind Farm	No change	No change	No change	Screen in (c)	No change	No change	Screen out (d)	No change	No change	Screen out (d)
East Anglia THREE Offshore Wind Farm	No change	No change	No change	No change	No change	No change	No change	No change	No change	No change
Eni Hynet – Carbon Capture Project	No change	No change	No change	No change	Likely depending on level of information available in application, and/or if the project interacts with the Liverpool Bay SPA during any project phase	No change	No change	No change	No change	Screen out (d)
Fecamp – Offshore Wind Farm	No change	No change	No change	No change	No change	No change	No change	No change	No change	Screen out (d)
Greystones Offshore Wind Farm	No change	No change	No change	No change	No change	No change	No change	No change	No change	No change
Haven Offshore Array	No change	No change	No change	No change	No change	No change	No change	No change	No change	No change
Kincardine – Floating Offshore Wind Project	No change	No change	No change	No change	No change	No change	No change	No change	No change	No change
Mainstream Renewable Power Ltd - Site Investigations off Tralee	No change	No change	No change	No change	No change	No change	No change	No change	No change	Screen out (d)
Mainstream, Renewable Power Ltd- Site Investigations off Co, Dublin	No change	No change	No change	No change	No change	No change	No change	No change	No change	Screen out (d)
Malin Sea Wind	No change	No change	No change	No change	No change	No change	No change	No change	No change	No change

Updates to Projects	Updates Impact on Topic Specific Screening									
Project Name	Physical Processes	Benthic Ecology	Fish and Shellfish Ecology	Marine Mammals	Offshore Ornithology	Commercial Fisheries	Shipping and Navigation	Marine Archaeology	Other Sea Users	Socio Economics
Neart Na Gaoithe Offshore Wind	No change	No change	No change	No change	No change	No change	No change	No change	No change	No change
Neart na Gaoithe Offshore Transmission Connection	No change	No change	No change	No change	No change	No change	No change	No change	No change	No change
Norfolk Boreas Offshore Wind Farm	No change	No change	No change	No change	No change	No change	No change	No change	No change	Screen out (d)
Oran na Mara Tidal Energy	No change	No change	No change	No change	No change	No change	No change	No change	No change	Screen out (d)
Péarla Offshore Wind Farm	No change	No change	No change	No change	No change	No change	No change	No change	No change	Screen out (d)
Project Erebus – Floating Offshore Wind Project	No change	No change	No change	No change	No change	No change	No change	No change	No change	No change
Sceirde (Skerd) Rocks - Site investigations	No change	No change	No change	No change	No change	No change	Screen out (d)	Screen out (d)	No change	Screen out (d)
Sceirde (Skerd) Rocks	No change	No change	No change	No change	No change	No change	No change	No change	No change	Screen out (d)
SEAI SAIPAM Site Investigation for Floating Offshore Wind testing at AMETS Site Mayo	No change	No change	No change	No change	No change	No change	No change	No change	No change	Screen out (d)
Stromar – Floating Offshore Wind Project	Screen out (d)	Screen out (d)	Screen out (d)	Screen out (d)	No change	Screen out (d)	Screen out (d)	Screen out (d)	No change	Screen out (d)
Seagreen Phase 1A Offshore Transmission Connection	Screen out (d)	Screen out (d)	No change	Screen out (d)	No change	Screen out (d)	Screen out (d)	Screen out (d)	No change	Screen out (d)
South Pembrokeshire Demonstration Zone	No change	No change	No change	No change	No change	No change	No change	No change	No change	Screen out (d)
Torr Head tidal site	No change	No change	No change	Screen out (g)	No change	No change	No change	No change	No change	No change

Updates to Projects	Updates Impact on Topic Specific Screening									
Project Name	Physical Processes	Benthic Ecology	Fish and Shellfish Ecology	Marine Mammals	Offshore Ornithology	Commercial Fisheries	Shipping and Navigation	Marine Archaeology	Other Sea Users	Socio Economics
West Anglesey Demonstration Zone tidal site	No change	No change	No change	No change	No change	No change	No change	No change	No change	No change
South Pembrokeshire Demonstration Zone	No change	No change	No change	No change	No change	No change	No change	No change	No change	Screen out (d)
Howley Weir	No change	No change	No change	No change	No change	No change	No change	No change	No change	No change
Penthyndeudraeth waste water treatment works - Final effluent outfall pipe repairs	Screen out (d)	Screen out (d)	Screen out (d)	Screen out (d)	No change	Screen out (d)	Screen out (d)	Screen out (d)	No change	Screen out (d)
Penthyndeudraeth waste water treatment works - Final effluent outfall pipe repairs	Screen out (d)	Screen out (d)	Screen out (d)	Screen out (d)	No change	Screen out (d)	Screen out (d)	Screen out (d)	No change	Screen out (d)
MaresConnect Interconnector - Surveys	Screen out (d)	Screen out (d)	Screen out (d)	Screen in (c)	Potentially, if the project interacts with the Liverpool Bay SPA during any project phase	Screen out (d)	No change	Screen out (d)	No change	Screen out (d)
Barmouth Viaduct Gardens	Screen out (d)	Screen out (d)	Screen out (d)	Screen out (d)	No change	Screen out (d)	Screen out (d)	Screen out (d)	No change	Screen out (d)
Tidal Valve Clearance at RAF Valley.	Screen out (d)	Screen out (d)	Screen out (d)	Screen out (d)	No change	Screen out (d)	Screen out (d)	Screen out (d)	No change	Screen out (d)
Lower Town Fishguard Slipway Repair	Screen out (d)	Screen out (d)	Screen out (d)	Screen out (d)	No change	Screen out (d)	Screen out (d)	Screen out (d)	No change	Screen out (d)
Glan Y Mor Public Right of Way (PRoW) Footbridge Maintenance and Erosion Control	Screen out (d)	Screen out (d)	Screen out (d)	Screen out (d)	No change	Screen out (d)	Screen out (d)	Screen out (d)	No change	Screen out (d)
HyNet Newbuild Carbon Dioxide Pipeline – Trenchless crossing of the River Dee	Screen out (d)	Screen out (d)	Screen out (d)	Screen out (d)	No change	Screen out (d)	Screen out (d)	Screen out (d)	No change	Screen out (d)

Updates to Projects	Updates Impact on Topic Specific Screening									
Project Name	Physical Processes	Benthic Ecology	Fish and Shellfish Ecology	Marine Mammals	Offshore Ornithology	Commercial Fisheries	Shipping and Navigation	Marine Archaeology	Other Sea Users	Socio Economics
Tidal door installation at Beeches outfall - River Dee	Screen out (d)	Screen out (d)	Screen out (d)	Screen out (d)	No change	Screen out (d)	Screen out (d)	Screen out (d)	No change	Screen out (d)
Menai Shellfish	Screen out (d)	Screen out (d)	Screen out (d)	Screen out (d)	No change	Screen out (d)	Screen out (d)	Screen out (d)	No change	Screen out (d)
Afon Wen Sheet Pile Repairs	Screen out (d)	Screen out (d)	Screen out (d)	Screen out (d)	No change	Screen out (d)	Screen out (d)	Screen out (d)	No change	Screen out (d)
Highway Flooding Reduction - H82 Station Road Deganwy, Station Road, Deganwy, Conwy	Screen out (d)	Screen out (d)	Screen out (d)	Screen out (d)	No change	Screen out (d)	Screen out (d)	Screen out (d)	No change	Screen out (d)
Highway Flooding Reduction H22 Morfa Drive Conwy	Screen out (d)	Screen out (d)	Screen out (d)	Screen out (d)	No change	Screen out (d)	Screen out (d)	Screen out (d)	No change	Screen out (d)
North Wales Wildlife Trust to perform Spinnies Aberogwen Outfall Clearance	Screen out (d)	Screen out (d)	Screen out (d)	Screen out (d)	No change	Screen out (d)	Screen out (d)	Screen out (d)	No change	Screen out (d)
Garth (Bangor) Pier refurbishment	Screen out (d)	Screen out (d)	Screen out (d)	Screen out (d)	No change	Screen out (d)	Screen out (d)	Screen out (d)	No change	Screen out (d)
Chepstow A48 Drainage	Screen out (d)	Screen out (d)	Screen out (d)	Screen out (d)	No change	Screen out (d)	Screen out (d)	Screen out (d)	No change	Screen out (d)
Morfa culvert remediation works	Screen out (d)	Screen out (d)	Screen out (d)	Screen out (d)	No change	Screen out (d)	Screen out (d)	Screen out (d)	No change	Screen out (d)
Installation of navigational marker beacons, flap valves, and concrete repairs at Rhos on Sea.	Screen out (d)	Screen out (d)	Screen out (d)	Screen out (d)	No change	Screen out (d)	Screen out (d)	Screen out (d)	No change	Screen out (d)
Emergency HW021 High Pressure Gas diversion under the River Towy.	Screen out (d)	Screen out (d)	Screen out (d)	Screen out (d)	No change	Screen out (d)	Screen out (d)	Screen out (d)	No change	Screen out (d)
Barmouth Beach Management	Screen out (d)	Screen out (d)	Screen out (d)	Screen out (d)	No change	Screen out (d)	Screen out (d)	Screen out (d)	No change	Screen out (d)

Updates to Projects	Updates Impact on Topic Specific Screening									
Project Name	Physical Processes	Benthic Ecology	Fish and Shellfish Ecology	Marine Mammals	Offshore Ornithology	Commercial Fisheries	Shipping and Navigation	Marine Archaeology	Other Sea Users	Socio Economics
Newquay Harbour Maintenance Dredge Disposal	Screen out (d)	Screen out (d)	Screen out (d)	Screen out (d)	No change	Screen out (d)	Screen out (d)	Screen out (d)	No change	Screen out (d)
Deganwy Marine Maintenance Dredge and Disposal	Screen out (d)	Screen out (d)	Screen out (d)	Screen out (d)	No change	Screen out (d)	Screen out (d)	Screen out (d)	No change	Screen out (d)
Maintenance dredge at Tenby Harbour	Screen out (d)	Screen out (d)	Screen out (d)	Screen out (d)	No change	Screen out (d)	Screen out (d)	Screen out (d)	No change	Screen out (d)
Awel y Môr Offshore Windfarm GI	Screen out (d)	Screen out (d)	Screen out (d)	Screen out (d)	Potentially, if the project interacts with the Liverpool Bay SPA during any project phase	Screen out (d)	Screen out (f)	Screen out (d)	No change	Screen out (d)
RAF Pembrey Tidal Flap Investigation Works	Screen out (d)	Screen out (d)	Screen out (d)	Screen out (d)	No change	Screen out (d)	Screen out (d)	Screen out (d)	No change	Screen out (d)
Aberystwyth Coastal Defence Scheme (CDS) - Investigations	Screen out (d)	Screen out (d)	Screen out (d)	Screen out (d)	No change	Screen out (d)	Screen out (d)	Screen out (d)	No change	Screen out (d)
Pembroke Dock Ground Investigation and Environmental Surveys	Screen out (d)	Screen out (d)	Screen out (d)	Screen out (d)	No change	Screen out (d)	Screen out (d)	Screen out (d)	No change	Screen out (d)
Meni Shellfish Project - Beach Road Pumping Station	Screen out (d)	Screen out (d)	Screen out (d)	Screen out (d)	No change	Screen out (d)	Screen out (d)	Screen out (d)	No change	Screen out (d)
Port Talbot Inner Dock Sampling	Screen out (d)	Screen out (d)	Screen out (d)	Screen out (d)	No change	Screen out (d)	Screen out (d)	Screen out (d)	No change	Screen out (d)
Newbridge, Port Talbot Ground Investigation	Screen out (d)	Screen out (d)	Screen out (d)	Screen out (d)	No change	Screen out (d)	Screen out (d)	Screen out (d)	No change	Screen out (d)
Pembroke Power Station Environmental Monitoring	Screen out (d)	Screen out (d)	Screen out (d)	Screen out (d)	No change	Screen out (d)	Screen out (d)	Screen out (d)	No change	Screen out (d)
Marine Survey & Site Investigation Works SOBR1	Screen out (d)	Screen out (d)	Screen out (f)	Screen out (f)	No change	Screen out (d)	Screen out (d)	Screen out (d)	No change	Screen out (d)

Updates to Projects	Updates Impact on Topic Specific Screening									
Project Name	Physical Processes	Benthic Ecology	Fish and Shellfish Ecology	Marine Mammals	Offshore Ornithology	Commercial Fisheries	Shipping and Navigation	Marine Archaeology	Other Sea Users	Socio Economics
Marine Survey & Site Investigation Works SOBR2	Screen out (d)	Screen out (d)	Screen out (f)	Screen out (f)	No change	Screen out (d)	Screen out (d)	Screen out (d)	No change	Screen out (d)
Marine Survey & Site Investigation Works Tuskar	Screen out (d)	Screen out (d)	Screen out (d)	Screen out (f)	No change	Screen out (d)	Screen out (d)	Screen out (d)	No change	Screen out (d)
EMEC Billia Croo	Screen out (d)	Screen out (d)	Screen out (d)	Screen out (d)	No change	Screen out (d)	Screen out (d)	Screen out (d)	No change	Screen out (d)
EMEC Scapa Flow	Screen out (d)	Screen out (d)	Screen out (d)	Screen out (d)	No change	Screen out (d)	Screen out (d)	Screen out (d)	No change	Screen out (d)
New Mooring - Deer Sound, Orkney.	Screen out (d)	Screen out (d)	Screen out (d)	Screen out (d)	No change	Screen out (d)	Screen out (d)	Screen out (d)	No change	Screen out (d)
Ayre Offshore Wind Farm	Screen out (d)	Screen out (d)	Screen out (d)	Screen out (d)	No change	Screen out (d)	Screen out (d)	Screen out (d)	No change	Screen out (d)
Bowdun Offshore Wind Farm	Screen out (d)	Screen out (d)	Screen out (d)	Screen out (d)	No change	Screen out (d)	Screen out (d)	Screen out (d)	No change	Screen out (d)
Flora – floating innovation project	Screen out (d)	Screen out (d)	Screen out (d)	Screen out (d)	No change	Screen out (d)	Screen out (d)	Screen out (d)	No change	Screen out (d)
Salamander Offshore Wind Farm	Screen out (d)	Screen out (d)	Screen out (d)	Screen out (d)	No change	Screen out (d)	Screen out (d)	Screen out (d)	No change	Screen out (d)
Scarben Floating Offshore Wind Project	Screen out (d)	Screen out (d)	Screen out (d)	Screen out (d)	No change	Screen out (d)	Screen out (d)	Screen out (d)	No change	Screen out (d)
Sinclair Floating Offshore Wind Project	Screen out (d)	Screen out (d)	Screen out (d)	Screen out (d)	No change	Screen out (d)	Screen out (d)	Screen out (d)	No change	Screen out (d)
Ramsey Sound Regeneration Project	Screen out (d)	Screen out (d)	Screen out (d)	Screen in (c)	No change	Screen out (d)	Screen out (d)	Screen out (d)	No change	Screen out (d)
Dogger Bank D	Screen out (d)	Screen out (d)	Screen out (d)	Screen out (d)	No change	Screen out (d)	Screen out (d)	Screen out (d)	No change	Screen out (d)
Oriel Windfarm Offshore Wind Farm	No change	No change	No change	No change	No change	No change	No change	No change	No change	Screen out (d)

Updates to Projects	Updates Impact on Topic Specific Screening									
Project Name	Physical Processes	Benthic Ecology	Fish and Shellfish Ecology	Marine Mammals	Offshore Ornithology	Commercial Fisheries	Shipping and Navigation	Marine Archaeology	Other Sea Users	Socio Economics
Arklow Bank Wind Park Phase 2	No change	No change	No change	No change	No change	No change	No change	No change	No change	Screen out (d)
Dogger Bank South (East)	No change	No change	No change	No change	No change	No change	No change	No change	No change	No change
Dogger Bank South (West)	No change	No change	No change	No change	No change	No change	No change	No change	No change	No change
North Irish Sea Array	No change	No change	No change	No change	No change	No change	No change	No change	No change	No change
Llŷr 1	No change	No change	No change	No change	No change	No change	No change	No change	No change	No change
Llŷr 2	No change	No change	No change	No change	No change	No change	No change	No change	No change	No change
North Falls	No change	No change	No change	No change	No change	No change	No change	No change	No change	Screen out (d)
Codling Wind Park	No change	No change	No change	No change	No change	No change	No change	No change	No change	Screen out (d)
Caer Vie onshore wind farm	Screen out (d)	Screen out (d)	Screen out (d)	Screen out (d)	No change	Screen out (d)	Screen out (d)	Screen out (d)	No change	Screen out (d)
Foel Fach Onshore Wind Farm	Screen out (d)	Screen out (d)	Screen out (d)	Screen out (d)	No change	Screen out (d)	Screen out (d)	Screen out (d)	No change	Screen out (d)
Royal Seaforth Dock Repowering	Screen out (d)	Screen out (d)	Screen out (d)	Screen out (d)	No change	Screen out (d)	Screen out (f)	Screen out (d)	No change	Screen out (d)
Liverpool Bay – Aggregates Site Agreement: 1808	No change	No change	No change	No change	No change	No change	No change	No change	No change	No change
Dun Laoghaire Harbour Company. Ref No. FS006713	No change	No change	No change	No change	No change	No change	No change	No change	No change	No change
North Sea Renewables Grid	Screen out (d)	Screen out (d)	Screen out (d)	Screen out (d)	No change	Screen out (d)	Screen out (d)	Screen out (d)	No change	Screen out (d)
Cenos Offshore Wind Farm	Screen out (d)	Screen out (d)	Screen out (d)	Screen out (d)	No change	Screen out (d)	Screen out (d)	Screen out (d)	No change	Screen out (d)
Culzean Floating Offshore Wind Turbine Pilot Project	Screen out (d)	Screen out (d)	Screen out (d)	Screen out (d)	No change	Screen out (d)	Screen out (d)	Screen out (d)	No change	Screen out (d)

Updates to Projects	Updates Impact on Topic Specific Screening									
Project Name	Physical Processes	Benthic Ecology	Fish and Shellfish Ecology	Marine Mammals	Offshore Ornithology	Commercial Fisheries	Shipping and Navigation	Marine Archaeology	Other Sea Users	Socio Economics
Judy	Screen out (d)	Screen out (d)	Screen out (d)	Screen out (d)	No change	Screen out (d)	Screen out (d)	Screen out (d)	No change	Screen out (d)
Tidal Test Site: Strangford Lough at Portaferry & Marfield Bay	Screen out (d)	Screen out (d)	Screen out (d)	Screen in (c)	Screen in (c)	Screen out (d)	Screen out (d)	Screen out (d)	No change	Screen out (d)
East Irish Sea Transmission Project*	No change	No change	No change	No change	Screen in (c)	No change	Screen in (c)	No change	No change	No change
Repair of sea wall, erect floodgate and install new drainage network.	Screen out (d)	Screen out (d)	Screen out (d)	Screen out (d)	No change	Screen out (d)	Screen out (d)	Screen out (d)	No change	Screen out (d)
Ceredigion County Council to perform Aberaeron Harbour Maintenance Dredge Disposal	Screen out (d)	Screen out (d)	Screen out (d)	Screen out (d)	No change	Screen out (d)	Screen out (d)	Screen out (d)	No change	Screen out (d)
Newport Transporter Bridge River Wall Works	Screen out (d)	Screen out (d)	Screen out (d)	Screen out (d)	No change	Screen out (d)	Screen out (d)	Screen out (d)	No change	Screen out (d)
A465 Clydach Underbridge Scour Repair and Protection Measures.	Screen out (d)	Screen out (d)	Screen out (d)	Screen out (d)	No change	Screen out (d)	Screen out (d)	Screen out (d)	No change	Screen out (d)
Living sea walls installation, Menai Strait	Screen out (d)	Screen out (d)	Screen out (d)	Screen out (d)	No change	Screen out (d)	Screen out (d)	Screen out (d)	No change	Screen out (d)
Pwll Sea Wall Void Repairs	Screen out (d)	Screen out (d)	Screen out (d)	Screen out (d)	No change	Screen out (d)	Screen out (d)	Screen out (d)	No change	Screen out (d)
Camrathen Swing Bridge Fender Removal	Screen out (d)	Screen out (d)	Screen out (d)	Screen out (d)	No change	Screen out (d)	Screen out (d)	Screen out (d)	No change	Screen out (d)
Living Sea Walls Amlwch Port	Screen out (d)	Screen out (d)	Screen out (d)	Screen out (d)	No change	Screen out (d)	Screen out (d)	Screen out (d)	No change	Screen out (d)
Maintenance Dredging at Swansea Yacht and Sub Aqua Club (SYSAC) Marina	Screen out (d)	Screen out (d)	Screen out (d)	Screen out (d)	No change	Screen out (d)	Screen out (d)	Screen out (d)	No change	Screen out (d)
Port Talbot Marine Ground Investigation Works	Screen out (d)	Screen out (d)	Screen out (d)	Screen out (d)	No change	Screen out (d)	Screen out (d)	Screen out (d)	Screen out (d)	Screen out (d)

Updates to Projects	Updates Impact on Topic Specific Screening									
Project Name	Physical Processes	Benthic Ecology	Fish and Shellfish Ecology	Marine Mammals	Offshore Ornithology	Commercial Fisheries	Shipping and Navigation	Marine Archaeology	Other Sea Users	Socio Economics
Maryport South Beach, tidal deposit removals	Screen out (d)	Screen out (d)	Screen out (d)	Screen out (d)	No change	Screen out (d)	Screen out (d)	Screen out (d)	No change	Screen out (d)
Endurance Carbon Capture	No change	No change	No change	No change	No change	No change	No change	No change	No change	Screen out (d)
ESB Celtic Offshore Wind - Site Investigations off Waterford and Cork	No change	No change	No change	Screen out (d)	No change	No change	No change	No change	No change	Screen out (d)
ESB Wind Development Limited Site Investigations at Sea Stacks Offshore Wind off Dublin and Wicklow	No change	No change	No change	Screen out (d)	No change	No change	No change	No change	No change	Screen out (d)
Green Volt Offshore Wind Farm	No change	No change	No change	No change	No change	No change	No change	No change	No change	No change
Hollandse Kust D – Offshore Wind Project	No change	No change	No change	No change	No change	No change	No change	No change	No change	No change
Hollandse Kust F – Offshore Wind Project	No change	No change	No change	No change	No change	No change	No change	No change	No change	No change
Muir Mhòr Offshore Wind Farm	Screen out (d)	No change	Screen out (d)	Screen out (d)	No change	Screen out (d)	Screen out (d)	Screen out (d)	No change	Screen out (d)
Ossian Wind Farm	No change	No change	No change	No change	No change	No change	No change	No change	No change	Screen out (d)
Sceirde (Skerd) Rocks Windfarm	No change	No change	No change	No change	No change	No change	No change	No change	No change	Screen out (d)
Voyage Offshore Wind Project	Screen out (g)	Screen out (g)	Screen out (g)	Screen out (g)	Screen out (g)	Screen out (g)	Screen out (g)	Screen out (g)	Screen out (g)	Screen out (g)

*The East Irish Sea Transmission Project is included in the CEA Screening list as the Section 35 direction for the project is in the public domain, however there is insufficient information available to consider the project within the CEA

Table 1.6: Summary of the onshore topic specific screening changes made since the submission of the ES based upon updates made to, and new projects added to the CEA longlist

Updates to Projects		Updates Impact on Topic Specific Screening											
Project Name	Geology, hydrogeology and ground conditions	Hydrology and flood risk	Onshore ecology and nature conservation	Onshore and intertidal ornithology	Historic environment	Land use and recreation	Traffic and transport	Noise and vibration	LVIA	Air quality	Climate change	Socio-economics	Aviation
"Discharge of condition 16 pursuant to permission 07/2024/00575/FUL for erection for new high school, demolition of existing school buildings and ancillary works. 352072, 428196"	Screen out (d)	Screen out (d)	Screen out (d)	Screen out (d)	Screen out (d)	Screen out (d)	Screen out (d)	Screen out (d)	Screen out (d)	Screen out (d)	Screen out (d)	Screen out (d)	Screen out (d)
"Demolition of Existing Buildings and Erection of 9 Detached Dwellings 348710, 423589"	Screen out (d)	Screen out (d)	Screen out (d)	Screen out (d)	Screen out (d)	Screen out (d)	Screen out (d)	Screen out (d)	Screen out (d)	Screen out (d)	Screen out (d)	Screen out (d)	Screen out (d)
"07/2024/00812/DIS Discharge of conditions 12, 14, 16 and 22 (Lidl section only) pursuant to permission 07/2024/00368/VAR for variation of conditions to allow phasing only of phases 1a, 1b, 2 and 3 (no technical or physical changes) as approved by permission 07/2020/01034/ORM for full planning permission for a phased development comprising: the erection of a retail store (Use Class E) with associated access, car	Screen out (d)	Screen out (d)	Screen out (d)	Screen out (d)	Screen out (d)	Screen out (d)	Screen out (d)	Screen out (d)	Screen out (d)	Screen out (d)	Screen out (d)	Screen out (d)	Screen out (d)

Updates to Projects		Updates Impact on Topic Specific Screening											
Project Name	Geology, hydrogeology and ground conditions	Hydrology and flood risk	Onshore ecology and nature conservation	Onshore and intertidal ornithology	Historic environment	Land use and recreation	Traffic and transport	Noise and vibration	LVIA	Air quality	Climate change	Socio-economics	Aviation
parking, electricity sub-station re-location, landscaping and servicing and delivery areas (Phase 1a); the erection of 120 dwellings (Use Class C3) and associated access off the Cross Borough Link Road, car parking, public open space, landscaping, and associated engineering and infrastructure works (Phase 1b); and Outline planning permission, with all matters reserved except for access, for a phased residential development comprising the erection of up to 181 dwellings (Phases 2 & 3). "													
"Discharge of conditions 10,11,13 and 30 (Lidl section only) pursuant to permission 07/2024/00368/VAR for variation of conditions to allow phasing only of phases 1a,1b, 2 and 3 (no technical or physical changes) as approved by permission 07/2020/01034/ORM for full planning permission for a phased development comprising: the erection of a retail store (Use Class E)	Screen out (d)	Screen out (d)	Screen out (d)	Screen out (d)	Screen out (d)	Screen out (d)	Screen out (d)	Screen out (d)	Screen out (d)	Screen out (d)	Screen out (d)	Screen out (d)	Screen out (d)

Updates to Projects		Updates Impact on Topic Specific Screening											
Project Name	Geology, hydrogeology and ground conditions	Hydrology and flood risk	Onshore ecology and nature conservation	Onshore and intertidal ornithology	Historic environment	Land use and recreation	Traffic and transport	Noise and vibration	LVIA	Air quality	Climate change	Socio-economics	Aviation
with associated access, car parking, electricity sub-station re-location, landscaping and servicing and delivery areas (Phase 1a); the erection of 120 dwellings (Use Class C3) and associated access off the Cross Borough Link Road, car parking, public open space, landscaping, and associated engineering and infrastructure works (Phase 1b); and Outline planning permission, with all matters reserved except for access, for a phased residential development comprising the erection of up to 181 dwellings (Phases 2 & 3). 353998, 427320"													
"Discharge of condition 6 pursuant to permission 07/2022/00021/FUL for siting of containerised battery energy storage units including electrical ancillary equipment, formation of new site vehicle entrance off Howick Cross Lane and installation of 2.5m high galvanised palisade fencing and gates. 350220, 428070"	Screen out (d)	Screen out (d)	Screen out (d)	Screen out (d)	Screen out (d)	Screen out (d)	Screen out (d)	Screen out (d)	Screen out (d)	Screen out (d)	Screen out (d)	Screen out (d)	Screen out (d)

Updates to Projects		Updates Impact on Topic Specific Screening											
Project Name	Geology, hydrogeology and ground conditions	Hydrology and flood risk	Onshore ecology and nature conservation	Onshore and intertidal ornithology	Historic environment	Land use and recreation	Traffic and transport	Noise and vibration	LVIA	Air quality	Climate change	Socio-economics	Aviation
"Discharge of conditions 6-7, 9-12, 25, 28-31 and 34 of permission 07/2023/00430/FUL for erection of 75 no apartments (being a mix of 1 bed and 2 bed self contained dwellings as part of an age restricted housing development which includes communal living space, cafe bistro and a small retail unit (open to the public) and associated hard and soft landscaping. 353469 , 421809"	Screen out (d)	Screen out (d)	Screen out (d)	Screen out (d)	Screen out (d)	Screen out (d)	Screen out (d)	Screen out (d)	Screen out (d)	Screen out (d)	Screen out (d)	Screen out (d)	Screen out (d)
"Erection commercial development comprising of units of varying sizes totalling 6,229sq m (flexible Use Classes E(g), B2, B8 and trade counter) and associated infrastructure, including new access onto Cuerden Way, following demolition of existing buildings 355817, 425459"	Screen out (d)	Screen out (d)	Screen out (d)	Screen out (d)	Screen out (d)	Screen out (d)	Screen out (d)	Screen out (d)	Screen out (d)	Screen out (d)	Screen out (d)	Screen out (d)	Screen out (d)
"Discharge of conditions 4 and 7 pursuant to planning permission 07/2020/00443/FUL (appeal 3271976) for erection of 11no. dwellings with associated works	Screen out (d)	Screen out (d)	Screen out (d)	Screen out (d)	Screen out (d)	Screen out (d)	Screen out (d)	Screen out (d)	Screen out (d)	Screen out (d)	Screen out (d)	Screen out (d)	Screen out (d)

Updates to Projects		Updates Impact on Topic Specific Screening											
Project Name	Geology, hydrogeology and ground conditions	Hydrology and flood risk	Onshore ecology and nature conservation	Onshore and intertidal ornithology	Historic environment	Land use and recreation	Traffic and transport	Noise and vibration	LVIA	Air quality	Climate change	Socio-economics	Aviation
357612, 426102"													
"Demolition of 2no. industrial buildings and erection of 5no. detached dwellings, 2no. detached garages and associated ancillary works. 349448, 424996"	Screen out (d)	Screen out (d)	Screen out (d)	Screen out (d)	Screen out (d)	Screen out (d)	Screen out (d)	Screen out (d)	Screen out (d)	Screen out (d)	Screen out (d)	Screen out (d)	Screen out (d)
"Discharge of condition 25 pursuant to permission 07/2022/00457/FUL for erection of 50 Residential Units with access, parking, open space and landscaping infrastructure 354709, 425674"	Screen out (d)	Screen out (d)	Screen out (d)	Screen out (d)	Screen out (d)	Screen out (d)	Screen out (d)	Screen out (d)	Screen out (d)	Screen out (d)	Screen out (d)	Screen out (d)	Screen out (d)
"Erection of a replacement secondary school with associated playing fields, landscaping, drainage, access and parking and subsequent demolition of existing buildings on site 352072, 428196"	Screen out (d)	Screen out (d)	Screen out (d)	Screen out (d)	Screen out (d)	Screen out (d)	Screen out (d)	Screen out (d)	Screen out (d)	Screen out (d)	Screen out (d)	Screen out (d)	Screen out (d)
"Outline application for proposed demolition of storage buildings and erection of up to 4no. self-build/custom-build detached dwellinghouses with garages (access, layout	Screen out (d)	Screen out (d)	Screen out (d)	Screen out (d)	Screen out (d)	Screen out (d)	Screen out (d)	Screen out (d)	Screen out (d)	Screen out (d)	Screen out (d)	Screen out (d)	Screen out (d)

Updates to Projects		Updates Impact on Topic Specific Screening											
Project Name	Geology, hydrogeology and ground conditions	Hydrology and flood risk	Onshore ecology and nature conservation	Onshore and intertidal ornithology	Historic environment	Land use and recreation	Traffic and transport	Noise and vibration	LVIA	Air quality	Climate change	Socio-economics	Aviation
and scale applied for only). Works to improve existing junction for vehicular access to Newgate Lane and proposed new footpath adjacent to Newgate Lane with connection to Newgate Lane along the eastern edge of the field to the south. Land Off Newgate Lane Whitestake Lancashire PR4 4JU"													
"Full planning application for residential development comprising 45 no. affordable dwellings incorporating a SUDS pond accessed via Farington Mews to the north. 352826, 423575"	Screen out (d)	Screen out (d)	Screen out (d)	Screen out (d)	Screen out (d)	Screen out (d)	Screen out (d)	Screen out (d)	Screen out (d)	Screen out (d)	Screen out (d)	Screen out (d)	Screen out (d)
Erection of 145 residential dwellings	Screen out (d)	Screen out (d)	Screen out (d)	Screen out (d)	Screen out (d)	Screen out (d)	Screen out (d)	Screen out (d)	Screen out (d)	Screen out (d)	Screen out (d)	Screen out (d)	Screen out (d)
"Variation of condition 2 (extension of southern estate road to facilitate access into undeveloped parcel of land) imposed upon permission 07/2020/00552/FUL for demolition of farm buildings,	Screen out (d)	Screen out (d)	Screen out (d)	Screen out (d)	Screen out (d)	Screen out (d)	Screen out (d)	Screen out (d)	Screen out (d)	Screen out (d)	Screen out (d)	Screen out (d)	Screen out (d)

Updates to Projects	Updates Impact on Topic Specific Screening												
	Geology, hydrogeology and ground conditions	Hydrology and flood risk	Onshore ecology and nature conservation	Onshore and intertidal ornithology	Historic environment	Land use and recreation	Traffic and transport	Noise and vibration	LVIA	Air quality	Climate change	Socio-economics	Aviation
erection of 121 dwellings and associated works 353263, 424122"													
"Demolition of existing buildings and erection of five detached houses, one detached garage and replacement garage with associated access and landscaping 348206, 424898"	Screen out (d)	Screen out (d)	Screen out (d)	Screen out (d)	Screen out (d)	Screen out (d)	Screen out (d)	Screen out (d)	Screen out (d)	Screen out (d)	Screen out (d)	Screen out (d)	Screen out (d)
"Non material amendment to substitute plots in line with updated Building Regulations - permission 07/2020/00544/REM for approval of reserved matters (appearance, landscaping, layout and scale) for the erection of 399 residential dwellings, internal access roads, garages, public open space and associated infrastructure 353055, 424015"	Screen out (d)	Screen out (d)	Screen out (d)	Screen out (d)	Screen out (d)	Screen out (d)	Screen out (d)	Screen out (d)	Screen out (d)	Screen out (d)	Screen out (d)	Screen out (d)	Screen out (d)
"Installation of 49.9 megawatt solar farm with associated infrastructure including: series of solar photovoltaic modules in arrays with string converters, transformers, substation, fencing and	Screen out (d)	Screen out (d)	Screen in (c)	Screen out (d)	Screen out (d)	Screen out (d)	Screen out (d)	Screen out (d)	Screen out (d)	Screen out (d)	Screen out (d)	Screen out (d)	Screen out (d)

Updates to Projects		Updates Impact on Topic Specific Screening											
Project Name	Geology, hydrogeology and ground conditions	Hydrology and flood risk	Onshore ecology and nature conservation	Onshore and intertidal ornithology	Historic environment	Land use and recreation	Traffic and transport	Noise and vibration	LVIA	Air quality	Climate change	Socio-economics	Aviation
thermal CCTV cameras, access tracks, cabling, landscaping and other habitat creation Clifton Marsh Farm Preston New Road Newton With Clifton Preston PR4 0XE"													
"Residential development of 9 detached dwellings with associated garages following the demolition of the existing bungalow and outbuildings. 352215, 422114"	Screen out (d)	Screen out (d)	Screen out (d)	Screen out (d)	Screen out (d)	Screen out (d)	Screen out (d)	Screen out (d)	Screen out (d)	Screen out (d)	Screen out (d)	Screen out (d)	Screen out (d)
"Request for a screening opinion for a full application for proposed solar farm comprised of solar arrays to generate C.8MW ancillary equipment under part 2 of of the town and country planning regulations 2017. Land South East Of Glenburn Depot White Moss Road South Skelmersdale Lancashire"	Screen out (d)	Screen out (d)	Screen out (d)	Screen out (d)	Screen out (d)	Screen out (d)	Screen out (d)	Screen out (d)	Screen out (d)	Screen out (d)	Screen out (d)	Screen out (d)	Screen out (d)
"Full planning permission for the demolition of existing buildings and structures and erection of a new industrial/warehouse building (B2 and B8 uses) including ancillary office space and associated... Allied Business Centre	Screen out (d)	Screen out (d)	Screen out (d)	Screen out (d)	Screen out (d)	Screen out (d)	Screen out (d)	Screen out (d)	Screen out (d)	Screen out (d)	Screen out (d)	Screen out (d)	Screen out (d)

Updates to Projects		Updates Impact on Topic Specific Screening											
Project Name	Geology, hydrogeology and ground conditions	Hydrology and flood risk	Onshore ecology and nature conservation	Onshore and intertidal ornithology	Historic environment	Land use and recreation	Traffic and transport	Noise and vibration	LVIA	Air quality	Climate change	Socio-economics	Aviation
Potter Place West Pimbo Up Holland Lancashire WN8 9PH 349768, 404216"													
"Demolition of existing structures and the erection of a housing scheme of 20 dwellings comprised of 8 dwelling houses, 4 bungalows and 8 cottage style apartments, with access, car parking, landscaping and other associated works. 339092, 420929 "	Screen out (d)	Screen out (d)	Screen out (d)	Screen out (d)	Screen out (d)	Screen out (d)	Screen out (d)	Screen out (d)	Screen out (d)	Screen out (d)	Screen out (d)	Screen out (d)	Screen out (d)
Outline application for development of a maximum of 1400 residential dwellings, 20 hectares of Class B2 general industrial/ Class B8 storage and distribution, Class D1 primary school, two local neighbourhood centres (Classes A1, A2/A3), Class A4 drinking establishment, Class D1 health centre, Class D1 community building, vehicle access onto Preston New Road and Mythop Road with associated road infrastructure, car parking, public open space, sports pitches, allotments, the	Screen out (d)	Screen out (d)	Screen out (d)	Screen out (d)	Screen out (d)	Screen out (d)	Screen out (d)	Screen out (d)	Screen out (d)	Screen out (d)	Screen out (d)	Screen out (d)	Screen out (d)

Updates to Projects	Updates Impact on Topic Specific Screening												
	Geology, hydrogeology and ground conditions	Hydrology and flood risk	Onshore ecology and nature conservation	Onshore and intertidal ornithology	Historic environment	Land use and recreation	Traffic and transport	Noise and vibration	LVIA	Air quality	Climate change	Socio-economics	Aviation
retention and improvement of natural habitats, watercourse, ponds, reed beds and hedgerows and landscape features.													
"Erection of 9no dwellinghouses with associated garages, parking , new access-egress from School Road, landscaping and boundary works. 333086, 431748"	Screen out (d)	Screen out (d)	Screen out (d)	Screen out (d)	Screen out (d)	Screen out (d)	Screen out (d)	Screen out (d)	Screen out (d)	Screen out (d)	Screen out (d)	Screen out (d)	Screen out (d)
"Outline application (all matters reserved) for demolition of existing detached property and garage and construction of up to 4 dwellings with associated garages, driveways and landscaping arrangements. 342414, 428862"	Screen out (d)	Screen out (d)	Screen out (d)	Screen out (d)	Screen out (d)	Screen out (d)	Screen out (d)	Screen out (d)	Screen out (d)	Screen out (d)	Screen out (d)	Screen out (d)	Screen out (d)
"Installation of a 14.77 hectare solar farm with associated equipment and infrastructure, including solar arrays, transformer stations, CCTV columns, post & wire fencing, access track and landscaping arrangements. 335909, 432027"	Screen out (d)	Screen out (d)	Screen out (d)	Screen out (d)	Screen out (d)	Screen out (d)	Screen out (d)	Screen out (d)	Screen out (d)	Screen out (d)	Screen out (d)	Screen out (d)	Screen out (d)

Updates to Projects		Updates Impact on Topic Specific Screening											
Project Name	Geology, hydrogeology and ground conditions	Hydrology and flood risk	Onshore ecology and nature conservation	Onshore and intertidal ornithology	Historic environment	Land use and recreation	Traffic and transport	Noise and vibration	LVIA	Air quality	Climate change	Socio-economics	Aviation
Extension and alterations to dwelling involving: 1) single storey rear extension following demolition of double height bay window; 2) insertion of new first floor window to rear elevation; and 3) insertion of new ground floor window to southeast facing side elevation	Screen out (d)	Screen out (d)	Screen out (d)	Screen out (d)	Screen out (d)	Screen out (d)	Screen out (d)	Screen out (d)	Screen out (d)	Screen out (d)	Screen out (d)	Screen out (d)	Screen out (d)
Single storey side and rear extension following demolition of existing side and rear extension	Screen out (d)	Screen out (d)	Screen out (d)	Screen out (d)	Screen out (d)	Screen out (d)	Screen out (d)	Screen out (d)	Screen out (d)	Screen out (d)	Screen out (d)	Screen out (d)	Screen out (d)
"Erection of two commercial storage units (use class b8) and provision of additional vehicle parking 330955, 431696"	Screen out (d)	Screen out (d)	Screen out (d)	Screen out (d)	Screen out (d)	Screen out (d)	Screen out (d)	Screen out (d)	Screen out (d)	Screen out (d)	Screen out (d)	Screen out (d)	Screen out (d)
"Erection of two storey side extension, two storey rear extension, detached garage to front of dwelling and formation of new vehicle access onto mains lane including installation of entrance gates up to 1.96 metres high within front boundary wall 336535, 440159"	Screen out (d)	Screen out (d)	Screen out (d)	Screen out (d)	Screen out (d)	Screen out (d)	Screen out (d)	Screen out (d)	Screen out (d)	Screen out (d)	Screen out (d)	Screen out (d)	Screen out (d)

Updates to Projects		Updates Impact on Topic Specific Screening											
Project Name	Geology, hydrogeology and ground conditions	Hydrology and flood risk	Onshore ecology and nature conservation	Onshore and intertidal ornithology	Historic environment	Land use and recreation	Traffic and transport	Noise and vibration	LVIA	Air quality	Climate change	Socio-economics	Aviation
"1) Erection of single storey rear extension and pergola following demolition of existing rear extension and conservatory; and 2) enlargement and alterations to front entrance 334538, 429271"	Screen out (d)	Screen out (d)	Screen out (d)	Screen out (d)	Screen out (d)	Screen out (d)	Screen out (d)	Screen out (d)	Screen out (d)	Screen out (d)	Screen out (d)	Screen out (d)	Screen out (d)
"Demolition of existing rear conservatory and glazed link to garages and erection of single storey rear extensions including alterations to existing garage roof 334057, 427729"	Screen out (d)	Screen out (d)	Screen out (d)	Screen out (d)	Screen out (d)	Screen out (d)	Screen out (d)	Screen out (d)	Screen out (d)	Screen out (d)	Screen out (d)	Screen out (d)	Screen out (d)
"Demolition of conservatory to rear and erection of single storey rear extension 342214, 428874"	Screen out (d)	Screen out (d)	Screen out (d)	Screen out (d)	Screen out (d)	Screen out (d)	Screen out (d)	Screen out (d)	Screen out (d)	Screen out (d)	Screen out (d)	Screen out (d)	Screen out (d)
Single storey side and rear extension following demolition of existing outbuilding and extension to front parking area	Screen out (d)	Screen out (d)	Screen out (d)	Screen out (d)	Screen out (d)	Screen out (d)	Screen out (d)	Screen out (d)	Screen out (d)	Screen out (d)	Screen out (d)	Screen out (d)	Screen out (d)
"Erection of garden room following removal of existing shed 342669, 428854"	Screen out (d)	Screen out (d)	Screen out (d)	Screen out (d)	Screen out (d)	Screen out (d)	Screen out (d)	Screen out (d)	Screen out (d)	Screen out (d)	Screen out (d)	Screen out (d)	Screen out (d)

Updates to Projects		Updates Impact on Topic Specific Screening											
Project Name	Geology, hydrogeology and ground conditions	Hydrology and flood risk	Onshore ecology and nature conservation	Onshore and intertidal ornithology	Historic environment	Land use and recreation	Traffic and transport	Noise and vibration	LVIA	Air quality	Climate change	Socio-economics	Aviation
"Outline planning application for the erection of single detached dwelling to be constructed as a self-build/custom dwelling and occupied as a rural workers dwelling (access applied for with all other matters reserved) 334118, 432181"	Screen out (d)	Screen out (d)	Screen out (d)	Screen out (d)	Screen out (d)	Screen out (d)	Screen out (d)	Screen out (d)	Screen out (d)	Screen out (d)	Screen out (d)	Screen out (d)	Screen out (d)
"Conversion of existing hay barn and shippon to form 3 no. residential dwellings to be built and occupied as self-build/custom dwellings 340301, 440143"	Screen out (d)	Screen out (d)	Screen out (d)	Screen out (d)	Screen out (d)	Screen out (d)	Screen out (d)	Screen out (d)	Screen out (d)	Screen out (d)	Screen out (d)	Screen out (d)	Screen out (d)
"Demolition of existing true bungalow and erection of replacement dwelling providing accommodation over three floors which is to be built and occupied as a self-build/custom dwelling, and accessed from widened driveway with 1.9m high gates hung off 2.4m high gateposts 333820, 427830"	Screen out (d)	Screen out (d)	Screen out (d)	Screen out (d)	Screen out (d)	Screen out (d)	Screen out (d)	Screen out (d)	Screen out (d)	Screen out (d)	Screen out (d)	Screen out (d)	Screen out (d)
"Erection of single storey detached summer house to rear 331909, 429282"	Screen out (d)	Screen out (d)	Screen out (d)	Screen out (d)	Screen out (d)	Screen out (d)	Screen out (d)	Screen out (d)	Screen out (d)	Screen out (d)	Screen out (d)	Screen out (d)	Screen out (d)

Updates to Projects		Updates Impact on Topic Specific Screening											
Project Name	Geology, hydrogeology and ground conditions	Hydrology and flood risk	Onshore ecology and nature conservation	Onshore and intertidal ornithology	Historic environment	Land use and recreation	Traffic and transport	Noise and vibration	LVIA	Air quality	Climate change	Socio-economics	Aviation
"Application for an environmental impact assessment screening and scoping opinion in respect of the proposed installation of a ground mounted solar PV farm and battery energy storage system (BESS) plus ancillary infrastructure and equipment, landscaping and access"	Screen out (d)	Screen out (d)	Screen out (d)	Screen out (d)	Screen out (d)	Screen out (d)	Screen out (d)	Screen out (d)	Screen out (d)	Screen out (d)	Screen out (d)	Screen out (d)	Screen out (d)
"Demolition of existing conservatory and construction of new single storey rear extension 342617, 428774"	Screen out (d)	Screen out (d)	Screen out (d)	Screen out (d)	Screen out (d)	Screen out (d)	Screen out (d)	Screen out (d)	Screen out (d)	Screen out (d)	Screen out (d)	Screen out (d)	Screen out (d)
Request for screening opinion pursuant to the town and country planning (environmental impact assessment) regulations 2017 in respect of proposed development of a ground mounted photovoltaic solar array farm (capacity up to 49.9mw ac) and associated ancillary development, and, a battery energy storage system (approximately 40mw ac) and associated ancillary development	Screen out (d)	Screen out (d)	Screen in (c)	Screen out (d)	Screen out (d)	Screen out (d)	Screen out (d)	Screen out (d)	Screen out (d)	Screen out (d)	Screen out (d)	Screen out (d)	Screen out (d)

Updates to Projects		Updates Impact on Topic Specific Screening											
Project Name	Geology, hydrogeology and ground conditions	Hydrology and flood risk	Onshore ecology and nature conservation	Onshore and intertidal ornithology	Historic environment	Land use and recreation	Traffic and transport	Noise and vibration	LVIA	Air quality	Climate change	Socio-economics	Aviation
Erection of new single storey primary school and integrated SEN unit with associated infrastructure, car parking, hard and soft play areas, multi-use games area and landscaping.	Screen out (d)	Screen out (d)	Screen out (d)	Screen out (d)	Screen out (d)	Screen out (d)	Screen out (d)	Screen out (d)	Screen out (d)	Screen out (d)	Screen out (d)	Screen out (d)	Screen out (d)
Erection of electricity sub station control kiosk and pump station control kiosk within utility compound, and erection of 2m high gates and fence- Fairfield Nurseries Puddle House Lane Poulton-Le-Fylde Lancashire FY6 8LB	Screen out (d)	Screen out (d)	Screen out (d)	Screen out (d)	Screen out (d)	Screen out (d)	Screen out (d)	Screen out (d)	Screen out (d)	Screen out (d)	Screen out (d)	Screen out (d)	Screen out (d)
EIA screening opinion for a proposed residential development of approx. 215 units with access, open space, landscaping and associated site works following demolition of existing commercial buildings- Land At Fouldrey Avenue, Poulton Le Fylde	Screen out (d)	Screen out (d)	Screen out (d)	Screen out (d)	Screen out (d)	Screen out (d)	Screen out (d)	Screen out (d)	Screen out (d)	Screen out (d)	Screen out (d)	Screen out (d)	Screen out (d)
Erection of a new retail food store together with associated car parking, servicing areas and landscaping including the provision of an electricity substation, and alterations to the highway- Land At Norcross Lane Thornton	Screen out (d)	Screen out (d)	Screen out (d)	Screen out (d)	Screen out (d)	Screen out (d)	Screen out (d)	Screen out (d)	Screen out (d)	Screen out (d)	Screen out (d)	Screen out (d)	Screen out (d)

Updates to Projects		Updates Impact on Topic Specific Screening											
Project Name	Geology, hydrogeology and ground conditions	Hydrology and flood risk	Onshore ecology and nature conservation	Onshore and intertidal ornithology	Historic environment	Land use and recreation	Traffic and transport	Noise and vibration	LVIA	Air quality	Climate change	Socio-economics	Aviation
Cleveleys Lancashire FY5 3TZ													
Creation of an EV charging zone with canopy, substation, meter cabinet, LV panel GRP enclosure, four covered and enclosed jet wash bays and associated works- 332641 , 442402	Screen out (d)	Screen out (d)	Screen out (d)	Screen out (d)	Screen out (d)	Screen out (d)	Screen out (d)	Screen out (d)	Screen out (d)	Screen out (d)	Screen out (d)	Screen out (d)	Screen out (d)
Reserved matters application for appearance, landscaping, layout and scale for the erection of up to 34 detached dwellings (following outline application 16/00807/OUTMAJ) (Pursuant to the variation of conditions 1 (Plans), 2 (Materials), 4 (Management and maintenance of streets), 6 (Phasing), 8 (Parking plan), 9 (Landscaping), 11 (Boundary treatments) and 13 (PD removal) on planning application 18/00746/REMAJ to vary the approved site layout, house types and mix, approved floor and elevation plans and changes to landscaping)- 351458 , 437097	Screen out (d)	Screen out (d)	Screen out (d)	Screen out (d)	Screen out (d)	Screen out (d)	Screen out (d)	Screen out (d)	Screen out (d)	Screen out (d)	Screen out (d)	Screen out (d)	Screen out (d)

Updates to Projects		Updates Impact on Topic Specific Screening											
Project Name	Geology, hydrogeology and ground conditions	Hydrology and flood risk	Onshore ecology and nature conservation	Onshore and intertidal ornithology	Historic environment	Land use and recreation	Traffic and transport	Noise and vibration	LVIA	Air quality	Climate change	Socio-economics	Aviation
"24/01007/FULMAJ Proposed erection of 2 no. buildings comprising of 11 holiday cottages (C3) with ancillary on site retail shop, wellness studio, car parking, and new access, following demolition of existing kennel site buildings (resubmission of 23/01150/FULMAJ)-339948 , 445326"	Screen out (d)	Screen out (d)	Screen out (d)	Screen out (d)	Screen out (d)	Screen out (d)	Screen out (d)	Screen out (d)	Screen out (d)	Screen out (d)	Screen out (d)	Screen out (d)	Screen out (d)
Erection of 93 dwellings with associated car parking, landscaping, open space improvements and access from Norcross Lane (Pursuant to the variation of condition 2 (Plans) on planning permission 21/01089/FULMAJ)-333241 , 441261	Screen out (d)	Screen out (d)	Screen out (d)	Screen out (d)	Screen out (d)	Screen out (d)	Screen out (d)	Screen out (d)	Screen out (d)	Screen out (d)	Screen out (d)	Screen out (d)	Screen out (d)
Scoping opinion in respect of the erection of up to 21 wind turbines up to 180m in height with a generating capacity of 100MW3 with associated infrastructure and access, including restoration and enhancement of degraded peat moorland Land At Rooley Moor, Rochdale	Screen out (d)	Screen out (d)	Screen out (d)	Screen out (d)	Screen out (d)	Screen out (d)	Screen out (d)	Screen out (d)	Screen out (d)	Screen out (d)	Screen out (d)	Screen out (d)	Screen out (d)

Updates to Projects		Updates Impact on Topic Specific Screening											
Project Name	Geology, hydrogeology and ground conditions	Hydrology and flood risk	Onshore ecology and nature conservation	Onshore and intertidal ornithology	Historic environment	Land use and recreation	Traffic and transport	Noise and vibration	LVIA	Air quality	Climate change	Socio-economics	Aviation
Removal of existing wind turbine and the erection of a replacement wind turbine with associated development- 389126, 437767	Screen out (d)	Screen out (d)	Screen out (d)	Screen out (d)	Screen out (d)	Screen out (d)	Screen out (d)	Screen out (d)	Screen out (d)	Screen out (d)	Screen out (d)	Screen out (d)	Screen out (d)
Outline planning application for 4no. industrial units (all matters reserved)- 352847,430314	Screen out (d)	Screen out (d)	Screen out (d)	Screen out (d)	Screen out (d)	Screen out (d)	Screen out (d)	Screen out (d)	Screen out (d)	Screen out (d)	Screen out (d)	Screen out (d)	Screen out (d)
Outline planning application (access applied for only with all other matters reserved) for a residential development of up to 95no. dwellings- 355411, 436987	Screen out (d)	Screen out (d)	Screen out (d)	Screen out (d)	Screen out (d)	Screen out (d)	Screen out (d)	Screen out (d)	Screen out (d)	Screen out (d)	Screen out (d)	Screen out (d)	Screen out (d)
Erection of new single storey primary school and integrated SEN unit with associated infrastructure, car parking, hard and soft play areas, multi-use games area and landscaping (Article 24 consultation)- 356295,436391	Screen out (d)	Screen out (d)	Screen out (d)	Screen out (d)	Screen out (d)	Screen out (d)	Screen out (d)	Screen out (d)	Screen out (d)	Screen out (d)	Screen out (d)	Screen out (d)	Screen out (d)
1no. ground mounted Solar PV farm and associated infrastructure-347938, 437623	Screen out (d)	Screen out (d)	Screen out (d)	Screen out (d)	Screen out (d)	Screen out (d)	Screen out (d)	Screen out (d)	Screen out (d)	Screen out (d)	Screen out (d)	Screen out (d)	Screen out (d)

Updates to Projects		Updates Impact on Topic Specific Screening											
Project Name	Geology, hydrogeology and ground conditions	Hydrology and flood risk	Onshore ecology and nature conservation	Onshore and intertidal ornithology	Historic environment	Land use and recreation	Traffic and transport	Noise and vibration	LVIA	Air quality	Climate change	Socio-economics	Aviation
Outline planning application for the erection of a local centre including flexible floorspace (Use Class E), drinking establishments (sui generis), and hot food takeaways (sui generis), medical centre (Class E(e)), public house (sui generis) with hotel accommodation (Class C1), and retirement apartments (Class C2) (all matters reserved) (pursuant to 06/2020/0966 to seek removal of condition no.17 BREEAM)- 349688, 433545	Screen out (d)	Screen out (d)	Screen out (d)	Screen out (d)	Screen out (d)	Screen out (d)	Screen out (d)	Screen out (d)	Screen out (d)	Screen out (d)	Screen out (d)	Screen out (d)	Screen out (d)
"Request for a formal scoping opinion under Regulation 13 of the Town and Country Planning (Environmental Impact Assessment) (England and Wales) Regulations 2011, proposed development for a new employment park, comprising of 5no. Class B2 and/or Class B8 employment units and 2no. drive thru units (Class E/Sui Generis) (total floorspace of 86,462 sqm), together with car and HGV parking areas, vehicular, cycling and pedestrian access off the existing roundabout and internal roads/servicing areas, landscaping, SuDS	Screen out (d)	Screen out (d)	Screen out (d)	Screen out (d)	Screen out (d)	Screen out (d)	Screen out (d)	Screen out (d)	Screen out (d)	Screen out (d)	Screen out (d)	Screen out (d)	Screen out (d)

Updates to Projects		Updates Impact on Topic Specific Screening											
Project Name	Geology, hydrogeology and ground conditions	Hydrology and flood risk	Onshore ecology and nature conservation	Onshore and intertidal ornithology	Historic environment	Land use and recreation	Traffic and transport	Noise and vibration	LVIA	Air quality	Climate change	Socio-economics	Aviation
features, and associated works- 357124, 433283 "													
Outline application for the construction of a new building comprising 2no. trade counter units (Class B8) and reconfigured internal access road, new HGV layby, relocated bin store and mechanical plant compounds seeking approval for access and layout only (all other matters reserved) (pursuant to 06/2023/1249 to seek variation of condition no.4 and removal of condition no.13)- 352763, 429619	Screen out (d)	Screen out (d)	Screen out (d)	Screen out (d)	Screen out (d)	Screen out (d)	Screen out (d)	Screen out (d)	Screen out (d)	Screen out (d)	Screen out (d)	Screen out (d)	Screen out (d)
Erection of extension to new school hall building comprising 6no. classrooms, 1no. Design Technology classroom, meeting rooms and ancillary space (Article 24 consultation)- 352863, 434364	Screen out (d)	Screen out (d)	Screen out (d)	Screen out (d)	Screen out (d)	Screen out (d)	Screen out (d)	Screen out (d)	Screen out (d)	Screen out (d)	Screen out (d)	Screen out (d)	Screen out (d)
24no. residential units (Class C3) and commercial development (Class E(g)) with associated access, landscaping and infrastructure- 349420 432005	Screen out (d)	Screen out (d)	Screen out (d)	Screen out (d)	Screen out (d)	Screen out (d)	Screen out (d)	Screen out (d)	Screen out (d)	Screen out (d)	Screen out (d)	Screen out (d)	Screen out (d)

Updates to Projects		Updates Impact on Topic Specific Screening											
Project Name	Geology, hydrogeology and ground conditions	Hydrology and flood risk	Onshore ecology and nature conservation	Onshore and intertidal ornithology	Historic environment	Land use and recreation	Traffic and transport	Noise and vibration	LVIA	Air quality	Climate change	Socio-economics	Aviation
Outline planning application (access applied for only with all other matters reserved) for a Motorway Services Area- 349134, 434224	Screen out (d)	Screen out (d)	Screen out (d)	Screen out (d)	Screen out (d)	Screen out (d)	Screen out (d)	Screen out (d)	Screen out (d)	Screen out (d)	Screen out (d)	Screen out (d)	Screen out (d)
12no. 1 bedroom apartments, 12no. 2 bedroom apartments with associated car parking, vehicular access off Francis Street with cycle and bin stores (pursuant to 06/2023/0191 to seek variation of condition no.1 approved plans)- 352304, 430122	Screen out (d)	Screen out (d)	Screen out (d)	Screen out (d)	Screen out (d)	Screen out (d)	Screen out (d)	Screen out (d)	Screen out (d)	Screen out (d)	Screen out (d)	Screen out (d)	Screen out (d)
Outline planning application (access applied for only with all other matters reserved) for a residential development of 20no. dwellings- 352731, 433962	Screen out (d)	Screen out (d)	Screen out (d)	Screen out (d)	Screen out (d)	Screen out (d)	Screen out (d)	Screen out (d)	Screen out (d)	Screen out (d)	Screen out (d)	Screen out (d)	Screen out (d)
Request for a screening opinion Pursuant to Regulation 6 of the Town and Country Planning (Environmental Impact Assessment) (England) Regulations 2017 for proposed development for erection of up to 430no. dwellings, primary school, linear park, and associated	Screen out (d)	Screen out (d)	Screen out (d)	Screen out (d)	Screen out (d)	Screen out (d)	Screen out (d)	Screen out (d)	Screen out (d)	Screen out (d)	Screen out (d)	Screen out (d)	Screen out (d)

Updates to Projects		Updates Impact on Topic Specific Screening											
Project Name	Geology, hydrogeology and ground conditions	Hydrology and flood risk	Onshore ecology and nature conservation	Onshore and intertidal ornithology	Historic environment	Land use and recreation	Traffic and transport	Noise and vibration	LVIA	Air quality	Climate change	Socio-economics	Aviation
infrastructure and works- 348953, 432566													
1no. three-storey residential development (Class C3) comprising 51no. retirement apartments, with landscaping, car parking and associated works, following demolition of existing buildings- 354221, 430751	Screen out (d)	Screen out (d)	Screen out (d)	Screen out (d)	Screen out (d)	Screen out (d)	Screen out (d)	Screen out (d)	Screen out (d)	Screen out (d)	Screen out (d)	Screen out (d)	Screen out (d)
Hybrid Planning Application comprising of: 1. Outline planning application for up to 195no. dwellings seeking approval for access from Bartle Lane only (all other matters reserved); and 2. Full planning application for the erection of dwellings (Phase 1) (pursuant to 06/2020/1344 to seek variation of condition no.1 approved plans)- 349606, 433501	Screen out (d)	Screen out (d)	Screen out (d)	Screen out (d)	Screen out (d)	Screen out (d)	Screen out (d)	Screen out (d)	Screen out (d)	Screen out (d)	Screen out (d)	Screen out (d)	Screen out (d)
Hybrid Planning Application comprising of: 1. Full planning application for erection of 26no. dwellings; and 2. Outline planning application for residential development of up to 429no. dwellings seeking	Screen out (d)	Screen out (d)	Screen out (d)	Screen out (d)	Screen out (d)	Screen out (d)	Screen out (d)	Screen out (d)	Screen out (d)	Screen out (d)	Screen out (d)	Screen out (d)	Screen out (d)

Updates to Projects		Updates Impact on Topic Specific Screening											
Project Name	Geology, hydrogeology and ground conditions	Hydrology and flood risk	Onshore ecology and nature conservation	Onshore and intertidal ornithology	Historic environment	Land use and recreation	Traffic and transport	Noise and vibration	LVIA	Air quality	Climate change	Socio-economics	Aviation
approval for access (all other matters reserved) (pursuant to 06/2021/1414 to seek variation of conditions no.18 (access from Bartle Lane) and no.20 (number of units to be served from access points)-349573, 433312													
Refurbishment of Waverley Park including installation of new car park (27 spaces), 2no. 11-a-side football pitches, 1no. 9-a-side football pitch, 1no. pump track, 1no. skate park following demolition of existing skate park, reconfiguration of existing car park to provide 34no. parking spaces, refurbishment of existing play area, widening and extension to existing footpaths, and associated hard and soft landscaping-356048, 430243	Screen out (d)	Screen out (d)	Screen out (d)	Screen out (d)	Screen out (d)	Screen out (d)	Screen out (d)	Screen out (d)	Screen out (d)	Screen out (d)	Screen out (d)	Screen out (d)	Screen out (d)
Outline application for the erection of a single storey building to accommodate a retail unit/convenience store (Use Class E(a)) and associated car parking (with all matters reserved)-355816, 415229	Screen out (d)	Screen out (d)	Screen out (d)	Screen out (d)	Screen out (d)	Screen out (d)	Screen out (d)	Screen out (d)	Screen out (d)	Screen out (d)	Screen out (d)	Screen out (d)	Screen out (d)

Updates to Projects		Updates Impact on Topic Specific Screening											
Project Name	Geology, hydrogeology and ground conditions	Hydrology and flood risk	Onshore ecology and nature conservation	Onshore and intertidal ornithology	Historic environment	Land use and recreation	Traffic and transport	Noise and vibration	LVIA	Air quality	Climate change	Socio-economics	Aviation
24/00952/FUL Erection of agricultural building (retrospective)- 362641, 423602	Screen out (d)	Screen out (d)	Screen out (d)	Screen out (d)	Screen out (d)	Screen out (d)	Screen out (d)	Screen out (d)	Screen out (d)	Screen out (d)	Screen out (d)	Screen out (d)	Screen out (d)
24/01108/FUL Erection of a neighbourhood convenience store- 357919, 415979	Screen out (d)	Screen out (d)	Screen out (d)	Screen out (d)	Screen out (d)	Screen out (d)	Screen out (d)	Screen out (d)	Screen out (d)	Screen out (d)	Screen out (d)	Screen out (d)	Screen out (d)
24/01084/FUL Siting of 37no. steel storage containers in order to facilitate the provision of a self storage facility and the erection of an associated booking office/cabin (retrospective)- 358549, 416963	Screen out (d)	Screen out (d)	Screen out (d)	Screen out (d)	Screen out (d)	Screen out (d)	Screen out (d)	Screen out (d)	Screen out (d)	Screen out (d)	Screen out (d)	Screen out (d)	Screen out (d)
24/00886/NLA Neighbouring local authority consultation from South Ribble Borough Council regarding an application for the demolition of existing single storey teaching building and erection of new two storey building to accommodate teaching laboratories	Screen out (d)	Screen out (d)	Screen out (d)	Screen out (d)	Screen out (d)	Screen out (d)	Screen out (d)	Screen out (d)	Screen out (d)	Screen out (d)	Screen out (d)	Screen out (d)	Screen out (d)
"Flood mitigation and habitat creation project associated with drainage in vicinity of Ribby Hall and browns lane, including 1) installation of a culverted watercourse, approximately	Screen out (d)	Screen out (d)	Screen in (c)	Screen out (d)	Screen out (d)	Screen out (d)	Screen out (d)	Screen out (d)	Screen out (d)	Screen out (d)	Screen out (d)	Screen out (d)	Screen out (d)

Updates to Projects		Updates Impact on Topic Specific Screening											
Project Name	Geology, hydrogeology and ground conditions	Hydrology and flood risk	Onshore ecology and nature conservation	Onshore and intertidal ornithology	Historic environment	Land use and recreation	Traffic and transport	Noise and vibration	LVIA	Air quality	Climate change	Socio-economics	Aviation
800m in length, from browns lane in a south westerly direction to a new attenuation pond that will discharge to Wrea Brook. 340613, 430884"													
"Demolition of existing single storey structure and erection of single storey rear extension. 337861, 427765"	Screen out (d)	Screen out (d)	Screen out (d)	Screen out (d)	Screen out (d)	Screen out (d)	Screen out (d)	Screen out (d)	Screen out (d)	Screen out (d)	Screen out (d)	Screen out (d)	Screen out (d)
"Request for screening opinion pursuant to the town and country planning (environmental impact assessment) regulations 2017 in respect of demolition, approximately 95,000sqm of new build development and 5,000sqm of refurbishment, and associated hardstanding / accessways, landscaping areas and supporting infrastructure including: 1) construction of new buildings to provide living accommodation, work, storage and office space, 2) construction of new training facilities to provide gymnasiums, sports fields and education space, 3) construction of a new health and dental facility"	Screen out (d)	Screen out (d)	Screen out (d)	Screen out (d)	Screen out (d)	Screen out (d)	Screen out (d)	Screen out (d)	Screen out (d)	Screen out (d)	Screen out (d)	Screen out (d)	Screen out (d)

Updates to Projects		Updates Impact on Topic Specific Screening											
Project Name	Geology, hydrogeology and ground conditions	Hydrology and flood risk	Onshore ecology and nature conservation	Onshore and intertidal ornithology	Historic environment	Land use and recreation	Traffic and transport	Noise and vibration	LVIA	Air quality	Climate change	Socio-economics	Aviation
"Erection of double garage to rear garden with habitable living annex above to be used in associated with 249 Lytham road, Warton, pr4 1ae. 340689, 428314"	Screen out (d)	Screen out (d)	Screen out (d)	Screen out (d)	Screen out (d)	Screen out (d)	Screen out (d)	Screen out (d)	Screen out (d)	Screen out (d)	Screen out (d)	Screen out (d)	Screen out (d)
Alteration of the dwelling: 1) reconfiguration of window and door arrangements to ground floor side elevation of dwelling outrigger, 2) render to side and rear ground floor elevation of dwelling outrigger, 3) demolition and rebuild of single storey building to rear. (retrospective application).	Screen out (d)	Screen out (d)	Screen out (d)	Screen out (d)	Screen out (d)	Screen out (d)	Screen out (d)	Screen out (d)	Screen out (d)	Screen out (d)	Screen out (d)	Screen out (d)	Screen out (d)
"Partial demolition of existing stable building and erection of a custom/ self build detached dormer bungalow. 340218, 431569"	Screen out (d)	Screen out (d)	Screen out (d)	Screen out (d)	Screen out (d)	Screen out (d)	Screen out (d)	Screen out (d)	Screen out (d)	Screen out (d)	Screen out (d)	Screen out (d)	Screen out (d)
"Demolition of existing bungalow and detached garage and erection of a detached dormer bungalow withing rated balcony feature to the front elevation and detached garage to rear garden 336051, 427335"	Screen out (d)	Screen out (d)	Screen out (d)	Screen out (d)	Screen out (d)	Screen out (d)	Screen out (d)	Screen out (d)	Screen out (d)	Screen out (d)	Screen out (d)	Screen out (d)	Screen out (d)

Updates to Projects		Updates Impact on Topic Specific Screening											
Project Name	Geology, hydrogeology and ground conditions	Hydrology and flood risk	Onshore ecology and nature conservation	Onshore and intertidal ornithology	Historic environment	Land use and recreation	Traffic and transport	Noise and vibration	LVIA	Air quality	Climate change	Socio-economics	Aviation
"Erection of detached garage and connecting canopy with secure access gate to create covered link with existing attached garage and installation of front boundary fence, gates and gateposts up to 1.3 metres in height 331143, 431533"	Screen out (d)	Screen out (d)	Screen out (d)	Screen out (d)	Screen out (d)	Screen out (d)	Screen out (d)	Screen out (d)	Screen out (d)	Screen out (d)	Screen out (d)	Screen out (d)	Screen out (d)
"Formation of 150 parking spaces and a surface water detention basin. 335695, 427971"	Screen out (d)	Screen out (d)	Screen out (d)	Screen out (d)	Screen out (d)	Screen out (d)	Screen out (d)	Screen out (d)	Screen out (d)	Screen out (d)	Screen out (d)	Screen out (d)	Screen out (d)
permission in principle for the demolition of existing shop and associated outbuildings and the erection of a minimum of three dwellings and up to a maximum of 5 dwellings.	Screen out (d)	Screen out (d)	Screen out (d)	Screen out (d)	Screen out (d)	Screen out (d)	Screen out (d)	Screen out (d)	Screen out (d)	Screen out (d)	Screen out (d)	Screen out (d)	Screen out (d)
Request for screening opinion pursuant to the town and country planning (environmental impact assessment) regulations 2017 in respect of the proposed operation of a 15.8 hectare solar farm and associated ancillary equipment and infrastructure	Screen out (d)	Screen out (d)	Screen out (d)	Screen out (d)	Screen out (d)	Screen out (d)	Screen out (d)	Screen out (d)	Screen out (d)	Screen out (d)	Screen out (d)	Screen out (d)	Screen out (d)

Updates to Projects		Updates Impact on Topic Specific Screening											
Project Name	Geology, hydrogeology and ground conditions	Hydrology and flood risk	Onshore ecology and nature conservation	Onshore and intertidal ornithology	Historic environment	Land use and recreation	Traffic and transport	Noise and vibration	LVIA	Air quality	Climate change	Socio-economics	Aviation
"Installation of a 32 hectare solar farm, with associated infrastructure including: series of solar photovoltaic arrays, switch rooms, substations, inverters power stations, fencing, pole mounted CCTV cameras, access tracks and landscaping and biodiversity measures. 344018, 430587"	Screen out (d)	Screen out (d)	Screen in (c)	Screen in (c)	Screen out (d)	Screen out (d)	Screen out (d)	Screen out (d)	Screen out (d)	Screen out (d)	Screen out (d)	Screen out (d)	Screen out (d)
"Construction of single storey building to provide five units for light industrial (class e(g)), general industry (b2) or storage and distribution (class b8) use, with associated access from woodside and car parking arrangements. 335165, 433276"	Screen out (d)	Screen out (d)	Screen out (d)	Screen out (d)	Screen out (d)	Screen out (d)	Screen out (d)	Screen out (d)	Screen out (d)	Screen out (d)	Screen out (d)	Screen out (d)	Screen out (d)
"Outline planning application (access and scale applied for with all other matters reserved) for the erection of a new data centre facility and associated plant/ equipment, substation, security office, multi storey car park, with associated primary access via Brunel way and secondary access via peel park.	Screen out (d)	Screen out (d)	Screen out (d)	Screen out (d)	Screen out (d)	Screen out (d)	Screen out (d)	Screen out (d)	Screen out (d)	Screen out (d)	Screen out (d)	Screen out (d)	Screen out (d)

Updates to Projects		Updates Impact on Topic Specific Screening											
Project Name	Geology, hydrogeology and ground conditions	Hydrology and flood risk	Onshore ecology and nature conservation	Onshore and intertidal ornithology	Historic environment	Land use and recreation	Traffic and transport	Noise and vibration	LVIA	Air quality	Climate change	Socio-economics	Aviation
334744, 433328"													
"Mixed-use development comprising a neighbourhood centre and 58 affordable dwellings, along with associated infrastructure including internal estate road, vehicular access onto cropper road, pedestrian and cycle links, parking, landscaping, public open space, surface water pump station and a suds balancing pond. 334558, 432463"	Screen out (d)	Screen out (d)	Screen out (d)	Screen out (d)	Screen out (d)	Screen out (d)	Screen out (d)	Screen out (d)	Screen out (d)	Screen out (d)	Screen out (d)	Screen out (d)	Screen out (d)
"Erection of two-storey building to provide for green keepers/staff welfare accommodation as replacement for existing structure / portacabin 335144, 427901"	Screen out (d)	Screen out (d)	Screen out (d)	Screen out (d)	Screen out (d)	Screen out (d)	Screen out (d)	Screen out (d)	Screen out (d)	Screen out (d)	Screen out (d)	Screen out (d)	Screen out (d)
"Erection of a single storey rear extension following demolition of an existing conservatory. 337953, 427368"	Screen out (d)	Screen out (d)	Screen out (d)	Screen out (d)	Screen out (d)	Screen out (d)	Screen out (d)	Screen out (d)	Screen out (d)	Screen out (d)	Screen out (d)	Screen out (d)	Screen out (d)

Updates to Projects		Updates Impact on Topic Specific Screening											
Project Name	Geology, hydrogeology and ground conditions	Hydrology and flood risk	Onshore ecology and nature conservation	Onshore and intertidal ornithology	Historic environment	Land use and recreation	Traffic and transport	Noise and vibration	LVIA	Air quality	Climate change	Socio-economics	Aviation
"Outline application for demolition of former ambulance station and erection of six, three storey townhouses with associated infrastructure (access, appearance, layout and scale applied for with landscaping reserved) 334840, 427546"	Screen out (d)	Screen out (d)	Screen out (d)	Screen out (d)	Screen out (d)	Screen out (d)	Screen out (d)	Screen out (d)	Screen out (d)	Screen out (d)	Screen out (d)	Screen out (d)	Screen out (d)
"Request for screening opinion pursuant to the town and country planning (environmental impact assessment) regulations 2017 in respect of the proposed installation of a 20.1 megawatts-peak solar farm together with ancillary equipment and infrastructure land at Blackpool airport squires gate lane Lytham St Annes FY4 2QS"	Screen out (d)	Screen out (d)	Screen in (c)	Screen in (c)	Screen out (d)	Screen out (d)	Screen out (d)	Screen out (d)	Screen out (d)	Screen out (d)	Screen out (d)	Screen out (d)	Screen out (d)
Request for screening opinion pursuant to the town and country planning environmental impact assessment regulations 2017 in respect of a battery energy storage facility Grid Ref: (335954 , 431832)	Screen out (d)	Screen out (d)	Screen out (d)	Screen out (d)	Screen out (d)	Screen out (d)	Screen out (d)	Screen out (d)	Screen out (d)	Screen out (d)	Screen out (d)	Screen out (d)	Screen out (d)

Updates to Projects		Updates Impact on Topic Specific Screening											
Project Name	Geology, hydrogeology and ground conditions	Hydrology and flood risk	Onshore ecology and nature conservation	Onshore and intertidal ornithology	Historic environment	Land use and recreation	Traffic and transport	Noise and vibration	LVIA	Air quality	Climate change	Socio-economics	Aviation
The Lancashire advanced engineering and manufacturing enterprise zone (Samlesbury) local development order no. 3 (2024) Grid Ref: (362136 , 430813)	Screen out (d)	Screen out (d)	Screen out (d)	Screen out (d)	Screen out (d)	Screen out (d)	Screen in (c)	Screen out (d)	Screen out (d)	Screen out (d)	Screen out (d)	Screen out (d)	Screen out (d)
"07/2021/00886/ORM and 07/2021/00887/ORM - Pickering's Farm Site, Flag Lane, Penwortham Grid ref: 353623 , 425764"	Screen out (d)	Screen out (d)	Screen out (d)	Screen out (d)	Screen out (d)	Screen out (d)	Screen in (c)	Screen out (d)	Screen out (d)	Screen out (d)	Screen out (d)	Screen out (d)	Screen out (d)
"Demolition of existing vehicle search point (VSP) and admin office buildings and erection of replacement single storey VSP and administrative facilities building with associated infrastructure including 60 space car park and new secure fencing and access gates up to 2.2 metres in height to site perimeter land at Blackpool airport squires gate lane Lytham St Annes FY4 2QS"	Screen out (d)	Screen out (d)	Screen out (d)	Screen out (d)	Screen out (d)	Screen out (d)	Screen out (d)	Screen out (d)	Screen out (d)	Screen out (d)	Screen out (d)	Screen out (d)	Screen out (d)
Installation of 49.9 megawatt solar farm with associated infrastructure including: series of solar photovoltaic modules in arrays with string converters. transformers, substation, fencing and	Screen out (d)	Screen out (d)	Screen in (c)	Screen in (c)	Screen out (d)	Screen out (d)	Screen out (d)	Screen out (d)	Screen out (d)	Screen out (d)	Screen out (d)	Screen out (d)	Screen out (d)

Updates to Projects		Updates Impact on Topic Specific Screening											
Project Name	Geology, hydrogeology and ground conditions	Hydrology and flood risk	Onshore ecology and nature conservation	Onshore and intertidal ornithology	Historic environment	Land use and recreation	Traffic and transport	Noise and vibration	LVIA	Air quality	Climate change	Socio-economics	Aviation
thermal CCTV cameras, access tracks, cabling, landscaping and other habitat creation													
39no. dwellings and 16no. maisonettes with associated infrastructure and vehicle accesses onto Blackpool Road	No change	No change	No change	No change	No change	No change	No change	No change	No change	No change	No change	No change	No change
Erection of 70no. market and affordable dwellings with associated access, pumping station and open space following demolition of the existing buildings	No change	No change	No change	No change	No change	No change	No change	No change	No change	No change	No change	No change	No change
Erection of part 4, 5 & 6 storey building comprising of 40 self-contained apartments with associated cycle/waste storage, and provision of 45 car parking spaces with access from Harrowside West, following demolition of existing hotel (Outline application for access, appearance, layout and scale).	No change	No change	No change	No change	No change	No change	No change	No change	No change	No change	No change	No change	No change
Approval of details reserved by condition 6 (e) of permission LCC/2014/0096 relating to the time scale for restoration following the decommissioning of the two PNR shale gas exploration	No change	No change	No change	No change	No change	No change	No change	No change	No change	No change	No change	No change	No change

Updates to Projects		Updates Impact on Topic Specific Screening											
Project Name	Geology, hydrogeology and ground conditions	Hydrology and flood risk	Onshore ecology and nature conservation	Onshore and intertidal ornithology	Historic environment	Land use and recreation	Traffic and transport	Noise and vibration	LVIA	Air quality	Climate change	Socio-economics	Aviation
wells and removal of pressure gauges													
The proposed development is anticipated to be an 8.6 MW green hydrogen facility with a Proton Exchange Membrane (PEM) electrolyser for the production of hydrogen including hydrogen storage, hydrogen delivery infrastructure to the brewery and hydrogen-powered vehicle refuelling facilities.	No change	No change	No change	No change	No change	No change	No change	No change	No change	No change	No change	No change	No change
Request for a Screening Opinion pursuant to Regulation 6 of the Town and Country Planning (Environmental Impact Assessment) (England) Regulations 2017 for proposed development of 1no. 9 storey and 1no. 10 storey building and change of use of the former Park Hotel and no.8 East Cliff to provide up to 440no. residential apartments, gym, co-working and café space.	No change	No change	No change	No change	No change	No change	No change	No change	No change	No change	No change	No change	No change
10no. commercial units for a mix use of Commercial, Business and Service (Class E) General industrial	No change	No change	No change	No change	No change	No change	No change	No change	No change	No change	No change	No change	No change

Updates to Projects		Updates Impact on Topic Specific Screening											
Project Name	Geology, hydrogeology and ground conditions	Hydrology and flood risk	Onshore ecology and nature conservation	Onshore and intertidal ornithology	Historic environment	Land use and recreation	Traffic and transport	Noise and vibration	LVIA	Air quality	Climate change	Socio-economics	Aviation
(Class B2) and Storage or distribution (Class B8) (pursuant to 06/2020/0941 to seek variation of condition no.1, 3, 4, 5, 6, 7, 8, 9, 10, 11, 12, 16, and 17)													
49no. two storey affordable homes, estate road with access from Lightfoot Lane, adoptable footway along the site frontage to Lightfoot Lane with new pedestrian footpath links to the existing footpath between 15 and 17 Oakwood Drive and to the roundabout at the junction of Tabley Lane and Tyneham Way, along with ancillary works including laying out of open space and retention of the existing on-site pond	No change	No change	No change	No change	No change	No change	No change	No change	No change	No change	No change	No change	No change
Installation of a ground mounted solar array, including construction of a high voltage transformer station, gravel access roads and a 2m perimeter mesh fence.	No change	No change	No change	No change	No change	No change	No change	No change	No change	No change	No change	No change	No change
Outline application for a six-storey building comprising 19no. residential apartments and ground floor commercial unit, following demolition of existing building	No change	No change	No change	No change	No change	No change	No change	No change	No change	No change	No change	No change	No change

Updates to Projects		Updates Impact on Topic Specific Screening											
Project Name	Geology, hydrogeology and ground conditions	Hydrology and flood risk	Onshore ecology and nature conservation	Onshore and intertidal ornithology	Historic environment	Land use and recreation	Traffic and transport	Noise and vibration	LVIA	Air quality	Climate change	Socio-economics	Aviation
Screening opinion for proposed development of 186 dwellings including land reserved for a primary school and associated access, open space and landscaping	No change	No change	No change	No change	No change	No change	No change	No change	No change	No change	No change	No change	No change
Consultation from Lancashire County Council regarding an application for Outline Planning Permission (with all matters reserved save for access from the public highway to Development Zones A, B and D (M65 Terminus Roundabout, A49 Wigan Road and Stanifield Lane) and strategic green infrastructure/landscaping) for a mixed-use development including the provision of Employment use (Use Classes B2/B8/E(g)); retail (use Class E(a)); food, drink and drive-through restaurant use (Use Class E(b)/Sui Generis Drive-Through); hotel use (Use Class C1); health, fitness and leisure use (Use Classes E(d)/F(e)/F2(b)); creche/nursery (Class E(f)); car showrooms (Use Class Sui Generis Car Showroom); Residential	No change	No change	No change	No change	No change	No change	No change	No change	No change	No change	No change	No change	No change

Updates to Projects		Updates Impact on Topic Specific Screening											
Project Name	Geology, hydrogeology and ground conditions	Hydrology and flood risk	Onshore ecology and nature conservation	Onshore and intertidal ornithology	Historic environment	Land use and recreation	Traffic and transport	Noise and vibration	LVIA	Air quality	Climate change	Socio-economics	Aviation
use (C3) the provision of associated car parking, access, public open space, landscaping and drainage. (Additional documents received)													
Environmental Impact Assessment (EIA) Screening Opinion for proposed replacement Wind Turbine on Land Adjacent to Southport Eco Centre.	No change	No change	No change	No change	No change	No change	No change	No change	No change	No change	No change	No change	No change
Request for a screening opinion Pursuant to Regulation 6 of the Town and Country Planning (Environmental Impact Assessment) (England) Regulations 2017 for proposed development of a Motorway Services Area	No change	No change	No change	No change	No change	No change	No change	No change	No change	No change	No change	No change	No change
Request for a screening opinion Pursuant to Regulation 6 of the Town and Country Planning (Environmental Impact Assessment) (England) Regulations 2017 for proposed development of up to 380 residential units with means of access to the public highway	No change	No change	No change	No change	No change	No change	No change	No change	No change	No change	No change	No change	No change

Updates to Projects		Updates Impact on Topic Specific Screening											
Project Name	Geology, hydrogeology and ground conditions	Hydrology and flood risk	Onshore ecology and nature conservation	Onshore and intertidal ornithology	Historic environment	Land use and recreation	Traffic and transport	Noise and vibration	LVIA	Air quality	Climate change	Socio-economics	Aviation
Request for screening opinion pursuant to the town and country planning environmental impact assessment regulations 2017 in respect of a residential development project at land north and south of old house lane in Westby (the Marton estate)	No change	No change	No change	No change	No change	No change	No change	No change	No change	No change	No change	No change	No change
Request for screening opinion for the repowering of the Royal Seaforth Dock wind turbines at Maritime Centre, Bootle Maritime Centre Royal Seaforth Dock Seaforth L21 1LA	No change	No change	No change	No change	No change	No change	No change	No change	No change	No change	No change	No change	No change
Request for a screening opinion Pursuant to Regulation 6 of the Town and Country Planning (Environmental Impact Assessment) (England) Regulations 2017 for proposed Battery Energy Storage System	No change	No change	No change	No change	No change	No change	No change	No change	No change	No change	No change	No change	No change
Request for a screening opinion for proposed development of a Motorway Services Area	No change	No change	No change	No change	No change	No change	No change	No change	No change	No change	No change	No change	No change

Updates to Projects		Updates Impact on Topic Specific Screening											
Project Name	Geology, hydrogeology and ground conditions	Hydrology and flood risk	Onshore ecology and nature conservation	Onshore and intertidal ornithology	Historic environment	Land use and recreation	Traffic and transport	Noise and vibration	LVIA	Air quality	Climate change	Socio-economics	Aviation
Request for a screening opinion for proposed Office Development	No change	No change	No change	No change	No change	No change	No change	No change	No change	No change	No change	No change	No change
Request for a screening opinion for proposed development for erection of 164no. dwellings with associated works including landscaping and access	No change	No change	No change	No change	No change	No change	No change	No change	No change	No change	No change	No change	No change

1.4 Review of the Transmission Assets CEA

Table 1.7: Review of the project updates that may affect cumulative effects assessment in the Transmission Assets Environmental Statement

Topic	Review of potential for further cumulative effects	Effect on conclusion of the ES
Physical processes (Volume 2, Chapter 1 (APP-042))	No new projects or projects that have been updated were screened into the CEA for physical processes. As such, no assessment for the cumulative impacts of those projects, new or updated, has been undertaken. There is no effect on the conclusions of the Environmental Statement CEA due to no projects being screened in.	No change to the conclusions of the Environmental Statement
Benthic subtidal and intertidal ecology (Volume 2, Chapter 2 (APP-045))	<p>The Eni Hynet – CCS Project and the Liverpool Bay Area 457 – Westminster Gravels Aggregate Extraction Licence have been identified as having potential for additional cumulative effects with the Transmission Assets for benthic ecology. The Eni Hynet – CCS Project has moved from a Tier 2 project to a Tier 1 project following the submission of the application and the Liverpool Bay Area 457 – Westminster Gravels Aggregate Extraction Licence project has also moved from a Tier 2 project to a Tier 1 project following the submission of the Environmental Statement to support a Marine Licence application for the continued dredging in Area 457.</p> <p>The cumulative effects assessed in Volume 2, Chapter 2: Benthic subtidal and intertidal ecology (APP-045) with potential to be influenced by the information available for these projects include:</p> <ul style="list-style-type: none"> Temporary habitat loss/disturbance: For the Tier 1 Eni Hynet – CCS Project, Chapter 7: Marine Biodiversity assessment of the Environmental Statement (Liverpool Bay CCS Ltd., 2024) predicted up to 1.91 km² of subtidal habitat loss/disturbance during construction and up to 72,000 m² during operation and maintenance. The Environmental Statement for the Liverpool Bay Area 457 – Westminster Gravels Aggregate Extraction Licence project (ERM, 2024) outlines that, as a maximum case scenario, it was assumed that the entirety of Area 457 (i.e. 64.8 km²) will be dredged. The Environmental Statement (ERM, 2024) however states that dredging will only take place within the active dredge area which will be discrete and localised. This aligns with the assessment presented in Volume 2, Chapter 2: Benthic subtidal and intertidal ecology (APP-045) which assumed 3.24 km² of disturbance from Liverpool Bay aggregate extraction area 457 based on the assumption that not all of the area would be dredged. The Crown Estate reports that, in 2022, only 3.50% of the total area of seabed licenced to be dredged in the North West region was actively dredged (The Crown Estate and MPA Marine Aggregates, 2023). For the purposes of the assessment, the MDS therefore assumed that a precautionary 5% of the total licensed area of Area 457 would be actively dredged during this period. It is unlikely that the whole site will be active at once therefore 	No change to the conclusions of the Environmental Statement.

Topic	Review of potential for further cumulative effects	Effect on conclusion of the ES
	<p>the impact associated with aggregate extraction at this site will be spread over the full length of the licence therefore resulting in longer-term low-level disturbance. These are small increases compared to the Tier 1 cumulative temporary habitat loss/disturbance during the construction phase of 156.23 km² and the Tier 1 cumulative temporary habitat loss/disturbance during the operations and maintenance phase of 53.11 km² identified in Volume 2, Chapter 2: Benthic subtidal and intertidal ecology (APP-045). Therefore, there is no change from the Transmission Assets CEA (for temporary habitat loss/disturbance), and the cumulative effects remain of minor adverse significance during construction, operations and maintenance and decommissioning.</p> <ul style="list-style-type: none"> Increased suspended sediment concentrations (SSC) and associated deposition: modelling undertaken for the Environmental Statement for the Liverpool Bay Area 457 – Westminster Gravels Aggregate Extraction Licence project (ERM, 2024) confirms that plumes arising from the aggregate extraction will run east to west and so will not move towards, and will therefore not interact with, the plumes arising from the Transmission Assets during the construction and operation and maintenance phases. This confirms the assumption included in Volume 2, Chapter 2: Benthic subtidal and intertidal ecology (APP-045). Therefore, there is no change from the Transmission Assets CEA (for increased SSC and associated deposition), and the cumulative effects remain of negligible to minor adverse significance during construction and operations and maintenance. Long term habitat loss/disturbance: the Eni Hynet – CCS Project has the potential for long term habitat loss during the operations and maintenance phase. For the Tier 1 Eni Hynet – CCS Project, Chapter 7: Marine Biodiversity assessment of the Environmental Statement (Liverpool Bay CCS Ltd., 2024) predicts up to 64,159 m² of long term habitat loss which is a very small increase on the Tier 1 cumulative long term habitat loss of 5.66 km² identified in Volume 2, Chapter 2: Benthic subtidal and intertidal ecology (APP-045). Therefore, there is no change from the Transmission Assets CEA (for long term habitat loss), and the cumulative effects remain of minor adverse significance during construction and operations and maintenance. Introduction of artificial structures and increased risk of introduction and spread of invasive non-native species: the introduction and spread of invasive non-native species (INNS) during all phases may be facilitated by increased vessel traffic and the presence of introduced hard substrate. For the Tier 1 Eni Hynet – CCS Project, Chapter 7: Marine Biodiversity assessment of the Environmental Statement (Liverpool Bay CCS Ltd., 2024) accounts for the creation of up to 64,169 m² of new hard substrate, up to 236 vessel return trips during the construction phase and up to 750 return trips over the 25 year lifetime of the project. These represent small increases compared to the Tier 1 cumulative introduction of artificial structures of 6.14 km² identified in Volume 2, Chapter 2: Benthic subtidal and intertidal ecology (APP- 	

Topic	Review of potential for further cumulative effects	Effect on conclusion of the ES
	045). The increase associated with the Eni Hynet – CCS Project are not considered to result in a change to the Transmission Assets CEA, and the cumulative effects remain of minor adverse significance during construction, operations and maintenance and decommissioning.	
Fish and shellfish ecology (Volume 3, Chapter 2 (APP-048))	<p>The Moor Vannin Lease Area Offshore Windfarm has been identified as having potential for additional cumulative effects with the Transmission Assets for fish and shellfish ecology from those considered in the original Environmental Statement. Specifically, the Moor Vannin Lease area has provided updated temporal dates of its construction, operations and maintenance, and decommissioning phases, which change its overlap with the construction period for the Transmission Assets. Of the other projects within the CEA study area which have been updated, the Isle of Man UK Interconnector 2, Liverpool Bay Area 457 – Westminster Gravels Aggregate Extraction Licence, and the Eni Hynet – Carbon Capture Project are relevant to the fish and shellfish ecology assessment, but none of the updates for these projects materially change the impacts assessed. For the Isle of Man UK Interconnector 2, this was due to no new specific magnitude details for any phase being clarified beyond confirmation of construction dates. For the Liverpool Bay Area 457 – Westminster Gravels Aggregate Extraction Licence, the tier changed due to the submission of an EIA report, but the specific magnitude information in the EIA matched the information previously available from the scoping report and therefore the overall cumulative magnitude was unchanged. Similarly, the Eni Hynet – Carbon Capture Project was updated to tier 1 due to recently being submitted but not yet determined, but the magnitude information was unchanged from the scoping stage that was used in the cumulative assessment.</p> <p>The cumulative effects assessed in Volume 2, Chapter 3: Fish and shellfish ecology (APP-048) with potential to be influenced by the information available for the Moor Vannin Lease area are set out below:</p> <p>Long term habitat loss construction and operations and maintenance phases: The Moor Vannin Lease area construction dates were previously unknown, but the project was previously included in the CEA as a precautionary measure due to its close proximity to the Transmission Assets and the potential for temporal overlap of construction phases. The dates of construction for the Moor Vannin Lease area have been confirmed for 2030-2032, which is outside of the planned offshore construction period of the Transmission Assets. Therefore, the Moor Vannin Lease area will only temporally overlap with the operations and maintenance phase of the Transmission Assets, reducing the overall potential impact on fish and shellfish receptors. Specific areas of long term habitat loss are not currently available for the Moor Vannin Lease area. As the change in programme represents only a slight decrease in magnitude, there is therefore no change from the Transmission Assets CEA for long term habitat loss, and the cumulative effects remain of minor adverse significance during both the construction and operations and maintenance phase for the Transmission Assets.</p>	No changes to the conclusions of the Environmental Statement.

Topic	Review of potential for further cumulative effects	Effect on conclusion of the ES
	<p>EMFs from subsea electrical cabling operations and maintenance phase: The Mooir Vannin Lease area construction dates were previously unknown, and the Moore Vannin Lease area was included on a precautionary basis, but have been confirmed for 2030-2032, beyond the construction phase of the Transmission Assets. Therefore, the operations and maintenance phase of the Mooir Vannin, when cables will be operating and producing EMFs, will overlap with the operations and maintenance phase of the Transmission for a shorter period overall, and the magnitude of the impact is likely to be reduced slightly. As no cable specifications are available for the Mooir Vannin Lease area, there is no change from the Transmission Assets CEA for EMFs from subsea electrical cabling, and the cumulative effects remain of minor adverse significance during the operations and maintenance phase for the Transmission Assets.</p> <p>Introduction and colonisation of hard substrata operations and maintenance phase: The Mooir Vannin Lease area construction dates were previously unknown, and the Moore Vannin Lease area was included on a precautionary basis, but have been confirmed for 2030-2032, which is outside of the planned construction period of the Transmission Assets. The introduced hard substrata for the Mooir Vannin Lease area will temporally overlap with the O&M phase of the Transmission Assets for a shorter period overall, and the magnitude of the impact is likely to be reduced slightly. As no cable specifications are available for the Mooir Vannin Lease area, there is no change from the Transmission Assets CEA for EMFs from introduction and colonisation of hard substrata, and the cumulative effects remain of minor adverse significance during the operations and maintenance phase for the Transmission Assets.</p> <p>Injury due to increased risk of collision all phases: The Mooir Vannin Lease area construction dates were previously unknown, and the Moore Vannin Lease area was included on a precautionary basis, but have been confirmed for 2030-2032, which is outside of the planned construction period of the Transmission Assets. This will reduce the total number of vessels operating in the local area during the Transmission Assets construction phase and will reduce the number of vessels operating simultaneously throughout all phases of both projects. As the number of vessels involved in the construction, operations and maintenance, and decommissioning phases of the Mooir Vannin Lease area are not currently known, this reduction does not reduce the total cumulative impact. Therefore, the cumulative effect remains of minor adverse significance during all phases for the Transmission Assets.</p>	
Marine mammals (Volume 2, Chapter 4 (APP-050))	Seven projects that have been updated to Tier 1 (see F1.5.5 Volume 1, Annex 5.5: Cumulative screening matrix and location plan (Clean) - Rev F02_F03 (REP1-020) for the complete project list and their Tiers as updated since the application) which are located within the Irish Sea and within the regional marine mammal study area. The cumulative effects that were assessed within Volume 2, Chapter 4: Marine mammals (APP-050) with potential to be influenced by this updated project information include:	No change to the conclusions of the Environmental Statement.

Topic	Review of potential for further cumulative effects	Effect on conclusion of the ES
	<p>Injury and disturbance from elevated underwater sound during unexploded ordnance (UXO) clearance</p> <p>The Morgan and Morecambe Transmission Assets CEA concluded a significant cumulative effect for potential injury from UXO clearance for harbour porpoise only (when assessed using the MDS of a high order clearance of a 907 kg UXO), however the Outline Marine Mammal Mitigation Protocol (MMMP) provides a strategy to reduce the magnitude of impacts from elevated underwater sound. Where clearance of UXO is required (i.e. avoidance is not possible) the Applicants have committed (at Examination Deadline 1) to the use of low order UXO clearance only, following engagement with the statutory nature conservation bodies and the Marine Management Organisation. High order UXO clearance will not be authorised under the draft Development Consent Order (DCO). Should high order UXO techniques be required, a separate marine licence will be applied for and will include consideration of secondary mitigation measures such as Noise Abatement Systems. As such, this approach will reduce the magnitude so that no residual significant effect for marine mammals will occur from the project alone. The Morgan and Morecambe Transmission Assets CEA included quantitative information on UXO clearance activities for Tier 1 projects Project Erebus, Mona Offshore Wind Project, Morecambe Offshore Windfarm: Generation Assets, Morgan Offshore Wind Project: Generation Assets, Awel y Môr Offshore Wind Farm and White Cross Offshore Wind Farm.</p> <p>Of the now Tier 1 projects, the only Tier 1 project which is under 100 km from the Morgan and Morecambe Transmission Assets is the Eni Hynet Carbon Capture Project (CCP) (located 5.74 km away) and therefore there is the potential for spatial overlap with underwater sound from UXO clearance. The assessment of UXO clearance for Eni Hynet CCP (based on both high order and low order UXO clearance) concluded that there was no significant effect for the impacts of injury or disturbance for all species. The ES concluded that the implementation of a UXO-specific MMMP would further reduce the likelihood for a significant effect on marine mammals due to UXO clearance. In addition, due to safety reasons UXO clearance activities would take place at a discrete stage prior to the construction phase (2024 to 2027) at Eni Hynet CCP. As such there is considered to be no potential for temporal overlap of UXO clearance with UXO clearance at the Morgan Morecambe Transmission Assets.</p> <p>Of the now Tier 1 projects, Arklow Bank 2, Codling, North Irish Sea Array, Oriel, Llŷr 1 and Dublin Array are all located over 100 km from the Morgan and Morecambe Transmission Assets and therefore there is no potential for spatial overlap in underwater sound from UXO clearance. A summary of the findings of the assessed effects of UXO clearance on marine mammals from these projects is provided below.</p> <p>The application for Arklow Bank 2, which lies 165.2 km from Morgan and Morecambe Transmission Assets, included an assessment of UXO clearance (based on high order and low order UXO clearance) for two project design options and concluded no significant effect for the impacts of injury and disturbance and will</p>	

Topic	Review of potential for further cumulative effects	Effect on conclusion of the ES
	<p>adopt a UXO-specific MMMP. North Irish Sea Array (located 107.7 km from the Morgan and Morecambe Transmission Assets) concluded no significant effect from injury for all species except for minke whale, which was assessed as moderate significance prior to the consideration of mitigation. However, the adoption of a MMMP with specific UXO measures led to a residual conclusion of no significant effect. Disturbance was concluded as not significant for all species for the project alone and scoped out of the CEA in North Irish Sea Array assessment. As no significant effect for minke whale was concluded for the Morgan and Morecambe Transmission Assets and considering the distance between these two projects, and the likelihood that UXO will be cleared prior to construction at the Morgan and Morecambe Transmission Assets (2026), it is anticipated that it is highly unlikely to result in changes to the conclusions of the CEA for the Morgan and Morecambe Transmission Assets. Dublin Array assessed both injury and disturbance due to UXO clearance (based on high order and low order UXO clearance) and concluded that there was no significant effect for all species and identified that mitigation will be applied via an MMMP. Liŷr 1 (located 291.2 km from the Morgan and Morecambe Transmission Assets) will be constructed in 2025 to 2026 and therefore there may be potential for temporal overlap with UXO clearance at the Morgan and Morecambe Transmission Assets, however, Liŷr 1 assessed both injury and disturbance due to UXO clearance (based on high order and low order UXO clearance) and concluded that there was no significant effect for all species, and identified that mitigation will be applied via a UXO-specific MMMP. The Oriel application did not include UXO clearance in their project design envelope. Codling (located 141.23 km from Morgan and Morecambe Transmission Assets) concluded no significant effect from disturbance for all species and no significant effect from injury except for minke whale, which was assessed as moderate significance prior to the consideration of mitigation. However, the adoption of a MMMP led to a residual conclusion of no significant effect. Disturbance was concluded as not significant for all species for the CEA.</p> <p>On the basis of the information presented above, the magnitude of the cumulative impact would not change from that set out in the Environmental Statement and therefore, it is considered that the conclusions of the Morgan and Morecambe Transmission Assets CEA remain unchanged. Potential for injury from underwater sound from UXO detonation during construction remains of moderate adverse significance, which will be reduced through the MMMP such that there is no residual likely significant effect for marine mammals from the project alone and the potential for disturbance from underwater sound during construction remains of minor adverse significance.</p> <p>Injury and disturbance from underwater sound generated from pre-construction survey sources</p> <p>For the Morgan and Morecambe Transmission Assets CEA the methodology (as agreed with the Marine Mammal Expert Working Group (EWG) as part of the Morgan Offshore Wind Project: Generation Assets (Appendix C of the Morgan Offshore Wind Project: Generation Assets – Part 1 (A to E) (APP-042)) assumed up to 15 Tier 1 site investigation surveys could be undertaken in the cumulative marine mammal study area.</p>	

Topic	Review of potential for further cumulative effects	Effect on conclusion of the ES
	<p>Subsequently, as surveys typically occur over short durations (typically up to 2 months) (based on expert judgement), conservatively the CEA methodology assumed that up to additional two surveys could overlap temporally with the Morgan and Morecambe Transmission Assets site-investigation surveys at any one time.</p> <p>Of the now Tier 1 projects, Arklow Bank 2, Codling Array, North Irish Sea Array, Llŷr 1 and Dublin Array also considered site investigation surveys and each concluded that the impact of disturbance was of minor adverse significance. Oriel considered routine geophysical surveys during the operational phase and concluded that the impact was of slight (minor) adverse significance. Site investigation surveys are predicted to be of local spatial extent, medium term duration and intermittent with high reversibility, and the likelihood of temporal overlap constrained by survey equipment availability. Therefore, it is considered that the conclusions of the Morgan and Morecambe Transmission Assets CEA remain unchanged, and that the cumulative injury and disturbance effect from pre-construction site investigation surveys remains of minor adverse significance.</p> <p>Injury and disturbance to marine mammals from elevated underwater sound due to vessel use and other sound producing activities</p> <p>For the potential injury and disturbance from vessel use and other sound producing activities, the Morgan and Morecambe Transmission Assets assessment has not identified any significant effects.</p> <p>Of the now Tier 1 projects, the only Tier 1 project under 100 km from the Morgan and Morecambe Transmission Assets is the Eni Hynet CCP (located 5.74 km away) and the assessment for injury and disturbance from vessel activity and other noise producing activities concluded a minor adverse significance for the construction, operational and decommissioning phases for the project alone and cumulatively. In addition, the Eni Hynet CCP has committed to an environmental management plan which includes minimising the potential injury to marine mammals.</p> <p>Of the now Tier 1 projects, Arklow Bank 2, Codling Array, North Irish Sea Array, Oriel, Llŷr 1 and Dublin Array all lie over 100 km from the Morgan and Morecambe Transmission Assets and therefore there is no potential for direct spatial overlap in injury and disturbance effect ranges. Arklow Bank 2 predicted no significant effects from injury and disturbance from vessels for the project alone, but excluded the impact from the CEA, and adopts an Environmental Vessel Management Plans which includes measures to minimise the potential disturbance of marine mammals from vessel activities. Codling, North Irish Sea Array and Dublin Array predicted injury and disturbance from elevated underwater sound due to vessels and other sound producing activities to be not significant for the construction, operational and decommissioning phases for the project alone and all three have committed to adopting Vessel Management Plans. The effect was excluded from the North Irish Sea Array CEA due to the highly localised impact. Oriel concluded no significant effect from the project alone or cumulatively. For Llŷr 1, the assessment identified vessel noise effects of negligible adverse</p>	

Topic	Review of potential for further cumulative effects	Effect on conclusion of the ES
	<p>significance. Considering this conclusion and the distance between the Morgan and Morecambe Transmission Assets and these Tier 1 projects, increased cumulative effects are highly unlikely.</p> <p>On the basis of the information presented above, it is considered that the conclusions of the Morgan and Morecambe Transmission Assets CEA remain unchanged, and that the disturbance from vessel use and other sound producing activities during construction/decommissioning and operation remains of minor adverse significance.</p>	
Offshore ornithology (Volume 2, Chapter 5 (APP-053))	<p>The Mooir Vannin Lease area, Isle of Man UK interconnector 2, Liverpool Bay Area 457 - Westminster Gravels Aggregate Extraction Licence and Eni Hynet – Carbon Capture Project have been identified as having potential for additional cumulative effects with the Transmission Assets for offshore ornithological receptors.</p> <p>The Mooir Vannin Lease area is located outside of the study area used to identify projects for consideration in Habitats Regulations Assessment Stage 2 Information to Support an Appropriate Assessment Part Three – SPA and Ramsar Site assessments (APP-017). The Mooir Vannin Lease area is however located within the offshore ornithology CEA study area and may therefore affect the conclusions of the assessments undertaken in Volume 2, Chapter 5: Offshore ornithology (APP-053). The species that may be affected are those that have a limited vulnerability to the cumulative impacts assessed in Volume 2, Chapter 5: Offshore ornithology (APP-053) and therefore, it is considered highly unlikely that any increase in the magnitude of impacts considered in Volume 2, Chapter 5: Offshore ornithology (APP-053) would be negligible and undetectable in relation to the existing cumulative impact. It is therefore considered that the updates to the information available for the Mooir Vannin Lease area do not result in any changes to the assessments presented in Volume 2, Chapter 5: Offshore ornithology (APP-053) and Habitats Regulations Assessment Stage 2 Information to Support an Appropriate Assessment Part Three –SPA and Ramsar Site assessments (APP-017).</p> <p>The Liverpool Bay Area 457 – Westminster Gravels Aggregate Extraction Licence project (ERM, 2024), Isle of Man UK interconnector 2 project and Eni Hynet – Carbon Capture Project are located within the cumulative study areas considered in both Volume 2, Chapter 5: Offshore ornithology (APP-053) and Habitats Regulations Assessment Stage 2 Information to Support an Appropriate Assessment Part Three – SPA and Ramsar Site assessments (APP-017). However, following the project's commitment to a seasonal restriction on works within the Liverpool Bay SPA plus a 2 km buffer (F1.5.3/F03), the Transmission Assets no longer contribute to a cumulative or in-combination impact on the qualifying features of the Liverpool Bay SPA. Changes to the status of these projects or the submission of additional information would therefore not influence the cumulative and in-combination assessments required for the Transmission Assets. For the remaining species considered in Volume 2, Chapter 5: Offshore ornithology (APP-053), these species have a</p>	No change to the conclusions reached in Volume 2, Chapter 5: Offshore ornithology (APP-053) and Habitats Regulations Assessment Stage 2 Information to Support an Appropriate Assessment Part Three –SPA and Ramsar Site assessments (APP-017)

Topic	Review of potential for further cumulative effects	Effect on conclusion of the ES
	<p>limited vulnerability to the cumulative impacts assessed in Volume 2, Chapter 5: Offshore ornithology (APP-053) and therefore, it is considered that any increase in the magnitude of impacts considered in Volume 2, Chapter 5: Offshore ornithology (APP-053) would be negligible and undetectable in relation to the existing cumulative impact.</p>	
<p>Commercial fisheries (Volume 2, Chapter 6 (APP-054))</p>	<p>The following projects, for which updated information is now available, fall within the Commercial Fisheries Cumulative Effects Assessment Study Area:</p> <ul style="list-style-type: none"> • The Moir Vannin Lease Area has provided updated temporal information regarding its construction, operations and maintenance and decommissioning phases. The confirmed construction period for the Moir Vannin Lease Area is now scheduled for 2030–2032, which falls outside the planned offshore construction period for the Transmission Assets. As a result, there will be no temporal overlap between the construction phases of the two projects. Any overlap will occur only during the operations and maintenance phase of the Transmission Assets. The updated programme does not introduce any new or additional potential cumulative effects on commercial fisheries receptors. Accordingly, the significance of cumulative effects remains unchanged from that assessed in the CEA for the Transmission Assets. • Due to the absence of specific magnitude details for any phase of the Isle of Man Interconnector 2, beyond confirmation of construction, operations and maintenance and decommissioning timelines, and given the limited associated environmental changes and activities, the project was screened out of the Transmission Assets CEA for commercial fisheries receptors. To date, no additional information has been provided beyond updated temporal data, and the proposed route of the Isle of Man Interconnector 2 remains undefined. Accordingly, the updated information submitted does not introduce any new potential cumulative effects in relation to the Transmission Assets and the project remains screened out of the CEA review. • Updated information submitted for the Liverpool Bay Area 457 confirms that the project lies outside the commercial fisheries CEA study area for the Transmission Assets. As such, it is not considered further in the CEA review, given the absence of a physical effect–receptor pathway. • The Eni Hynet – CCS Project will repurpose pre-existing oil and gas infrastructure, effectively transforming the site into a CCS facility with minimal changes to the surrounding marine environment. Where new infrastructure is required, it will be installed either within the existing operational footprint or in close proximity to existing linear infrastructure. Given the limited environmental changes and additional activities associated with this project, it was screened out of the CEA for commercial fisheries receptors. 	<p>No change to the conclusions of the Environmental Statement.</p>

Topic	Review of potential for further cumulative effects	Effect on conclusion of the ES
	<p>The updated information presented does not introduce new potential cumulative effects with the Transmission Assets, and therefore, the project has been screened out of the CEA review.</p> <p>None of these updates result in any changes to the conclusions of the cumulative assessment for commercial fisheries, as presented in the Environmental Statement.</p>	
Shipping and navigation (Volume 2, Chapter 7 (APP-056))	<p>The proposed route of the Isle of Man Interconnector 2 is not currently defined, however based on the information provided, there is potential for the cable to be located within the shipping and navigation CEA study area.</p> <p>The East Irish Sea Transmission Project, formerly known as the Moir Vannin Transmission Assets, are located within the shipping and navigation CEA study area. It is noted that the specific cable route/s associated with this project are not yet defined and the export cable corridor search area is wide reaching.</p> <p>Cable installation and maintenance and repair activities associated with the two aforementioned cable projects have the potential to disrupt traffic navigating through the shipping and navigation CEA study area during their cable installation or through-life repairs. It is assumed that these projects would be required to implement similar measures to those outlined for the Transmission Assets as outlined in section 7.8 of Volume 2, Chapter 7: Shipping and navigation (APP-056) in order to reduce their impacts as far as practical, such as a Vessel Traffic Management Plan, Notice to Mariners (NtMs) and compliance with international conventions such as the Collision Regulations and Safety of Life at Sea (SOLAS) Convention. The cumulative effects assessed in section 7.13 of Volume 2, Chapter 7: Shipping and navigation (APP-056) with potential to be influenced by the two cable projects include:</p> <ul style="list-style-type: none"> • Impact to commercial operators including strategic routes and lifeline ferries in both typical and adverse weather conditions: the newly identified cable project will result in increased vessel traffic if their final locations are in close proximity to the Transmission Assets, which has the potential to result in a minor change to the magnitude of impacts to shipping routes. The spatial extent of the potential impact is relatively small and the impacts will be of short duration. The anticipated increase in traffic is small compared to the baseline and would be managed through appropriate risk controls (such as NtMs and adherence to the International Regulations for preventing collisions at sea 1972 (COLREGs)), and therefore the significance of the cumulative effects would not change from that assessed in the Transmission Assets CEA. • Impact on emergency response capability due to increased incident rates and reduced access for search and rescue responders: This will be managed by the respective projects, through for example an 	No change to the conclusions of the Environmental Statement.

Topic	Review of potential for further cumulative effects	Effect on conclusion of the ES
	<p>Emergency Response and Cooperation Plan (ERCoP), and therefore the significance of the cumulative effects would not change from that assessed in the Transmission Assets CEA.</p> <ul style="list-style-type: none"> • Impact of vessel-to-vessel collision risk: the cable projects will result in minor increases in vessel traffic which has the potential to result in a small change in the magnitude of impact of vessel-to-vessel collision risk. The spatial extent of the potential impact is minimal and the impacts will be of short duration. Given the available searoom, minor increase in vessel movements and effective management through appropriate risk controls (such as NtMs and adherence to COLREGs), the significance of the cumulative effects would not change from that assessed in the Transmission Assets CEA. • Impact on recreational craft passages and safety: the cable projects will result in increased vessel traffic which has the potential to result in a minor change in the magnitude of impact of vessel-to-vessel collision risk, including with recreational craft. The spatial extent of the potential impact is relatively small and the impacts will be of short duration. Given the available searoom, minor increases in vessel movements and effective management through appropriate risk controls (such as NtMs and adherence to COLREGs), the significance of the cumulative effects would not change from that assessed in the Transmission Assets CEA. • Impact on snagging risk to vessel anchors and fishing gear and impact on under keel clearance (UKC): additional cables and associated cable crossings have the potential to increase the likelihood of snagging risk to vessel anchors and fishing gear, as well as impact on reducing UKC across the shipping and navigation cumulative study area, however, the measures likely to be put in place to manage this risk (such as marking and charting, cable burial or protection, fisheries liaison and maximum 5% reduction in UKC in line with Maritime and Coastguard Agency guidance) are robust. The significance of the cumulative effects would not change from that assessed in the Transmission Assets CEA. • Impact on oil and gas navigation, operations and safety: The presence of cable laying vessels and Transmission Assets construction vessels near to oil and gas operations could cause temporary and minor modifications for ongoing oil and gas operations and ongoing platform decommissioning activities. If cable routing is in proximity to oil and gas assets, these would cause a minor increase in traffic and deviations around cable installation or repair activities which could affect oil and gas navigation, operations and safety. However, it is assumed that these projects would be required to implement similar measures to those outlined for the Transmission Assets, including a Vessel Traffic Management Plan, NtMs and ERCoPs, and therefore the significance of the cumulative effects would not change from that assessed in the Transmission Assets CEA. 	

Topic	Review of potential for further cumulative effects	Effect on conclusion of the ES
Marine archaeology (Volume 2, Chapter 8 (APP-059))	<p>Only Isle of Man UK Interconnector 2 and the Millom East Assets are within the Marine Archaeology Cumulative Effects Assessment Study Area.</p> <ul style="list-style-type: none"> The updated temporal dates of construction, operations and maintenance and decommissioning of the Isle of Man UK Interconnector 2 do not lead to increased impacts to those assessed in the Transmission Assets ES as no new specific magnitude details for any phase have been clarified beyond the confirmation of construction dates. The updated decommissioning programme for the Millom East Assets is not relevant to the impacts considered in the Marine archaeology CEA assessment as no new specific magnitude details have been clarified beyond the confirmation of decommissioning dates. 	No change to the conclusions of the Environmental Statement.
Other sea users (Volume 2, Chapter 9 (APP-061))	<p>The following projects with updated information are within the Other Sea Users Cumulative Effects Assessment Study Area:</p> <ul style="list-style-type: none"> The Mooir Vannin Lease area, for which there are updated temporal data The Isle of Man interconnector 2, for which there are updated temporal data Liverpool Bay Area 457, which has been updated to a Tier 2 project The Millom East Assets, which have updated decommissioning programmes The Eni Hynet project, which has been updated to a Tier 1 project. MaresConnect Interconnector Surveys, a project newly identified and added to the long list The Installation of navigational marker beacons, flap valves, and concrete repairs at Rhos on Sea, a project newly identified and added to the long list. <p>The cumulative effect assessed in Volume 2, Chapter 9: Fish and shellfish ecology (APP-054) with potential to be influenced by the information available for the above projects is the Reduction or restriction of other offshore energy activities, which is assessed as being of minor adverse significance. None of the updated information for the above projects would result in an update to the low magnitude of this impact or the medium sensitivity of the receptors assessed for this impact, and therefore there would be no change to the conclusion of minor adverse significance presented in section 9.13.2 of Volume 2, Chapter 9: Other sea users of the ES.</p>	No change to the conclusions of the Environmental Statement.

Topic	Review of potential for further cumulative effects	Effect on conclusion of the ES
Geology, hydrogeology and ground conditions (Volume 3, Chapter 1 (APP-068))	No new projects or projects that have been updated were screened into the CEA for Geology, hydrogeology and ground conditions. As such, no assessment for the cumulative impacts of those projects, new or updated, has been undertaken. There is no effect on the conclusions of the Environmental Statement CEA due to no projects being screened in.	No change to the conclusions of the Environmental Statement
Hydrology and flood risk (Volume 3, Chapter 2 (APP-070))	No new projects or projects that have been updated were screened into the CEA for Hydrology and flood risk. As such, no assessment for the cumulative impacts of those projects, new or updated, has been undertaken. There is no effect on the conclusions of the Environmental Statement CEA due to no projects being screened in.	No change to the conclusions of the Environmental Statement
Onshore ecology and nature conservation (Volume 3, Chapter 3 (APP-076))	<p>The following projects with updated information are within the onshore ecology and nature conservation study area are:</p> <ul style="list-style-type: none"> • Installation of a 32 hectare solar farm, with associated infrastructure including: series of solar photovoltaic arrays, switch rooms, substations, inverters power stations, fencing, pole mounted CCTV cameras, access tracks and landscaping and biodiversity measures. • Request for screening opinion pursuant to the Town and Country Planning (EIA) Regulations 2017 in respect of Proposed Development of a ground mounted photovoltaic solar array farm (capacity up to 49.9 MW AC) and associated ancillary development, and, a battery storage system (approximately 40 MW AC) and associated ancillary development. • Installation of 49.9MW solar farm with associated infrastructure including: series of solar photovoltaic modules in arrays with string converters. transformers, substation, fencing and thermal CCTV cameras, access tracks, cabling, landscaping and other habitat creation. • Flood mitigation and habitat creation project associated with drainage in vicinity of Ribby Hall and Browns Lane, including 1) Installation of a culverted watercourse, approximately 800 m in length, from Browns Lane in a south westerly direction to a new attenuation pond that will discharge to Wrea Brook. • Request for screening opinion pursuant to the town and country planning (environmental impact assessment) regulations 2017 in respect of the proposed installation of a 20.1MW -peak solar farm together with ancillary equipment and infrastructure land at Blackpool Airport squires gate lane Lytham St Annes FY4 2QS. 	No change to the conclusions of the Environmental Statement.

Topic	Review of potential for further cumulative effects	Effect on conclusion of the ES
Onshore and intertidal ornithology (Volume 3, Chapter 4 (APP-090))	<p>The following projects with updated information are within the onshore and intertidal ornithology study area are:</p> <ul style="list-style-type: none"> • Installation of a 32 hectare solar farm, with associated infrastructure including: series of solar photovoltaic arrays, switch rooms, substations, inverters power stations, fencing, pole mounted CCTV cameras, access tracks and landscaping and biodiversity measures. • Installation of 49.9MW solar farm with associated infrastructure including: series of solar photovoltaic modules in arrays with string converters. transformers, substation, fencing and thermal CCTV cameras, access tracks, cabling, landscaping and other habitat creation • Request for screening opinion pursuant to the town and country planning (environmental impact assessment) regulations 2017 in respect of the proposed installation of a 20.1MW -peak solar farm together with ancillary equipment and infrastructure land at Blackpool Airport squires gate lane Lytham St Annes FY4 2QS <p>Although detailed information on the two proposed solar farms was not available at the application stage, the cumulative effects of projects were assessed in Volume 3, Chapter 4: Onshore and intertidal ornithology (APP-090) based on their footprint and their assumed significance for birds. Consequently, as the footprint of these projects remains unchanged, none of the updated information regarding these projects would lead to any changes in the conclusions of the cumulative assessment for onshore and intertidal ornithology presented in the Environmental Statement.</p> <p>The Blackpool Airport project is entirely contained within Blackpool Airport, where birds are managed due to safety concerns, as they pose a potential hazard to aviation. Therefore, this project will have no additional impact.</p>	No change to the conclusions of the Environmental Statement.
Historic environment (Volume 3, Chapter 5 (APP-096))	No new projects or projects that have been updated were screened into the CEA for Historic environment. As such, no assessment for the cumulative impacts of those projects, new or updated, has been undertaken. There is no effect on the conclusions of the Environmental Statement CEA due to no projects being screened in.	No change to the conclusions of the Environmental Statement
Land use and recreation (Volume 3, Chapter 6 (APP-104))	No new projects or projects that have been updated were screened into the CEA for Land use and recreation. As such, no assessment for the cumulative impacts of those projects, new or updated, has been undertaken. There is no effect on the conclusions of the Environmental Statement CEA due to no projects being screened in.	No change to the conclusions of the Environmental Statement

Topic	Review of potential for further cumulative effects	Effect on conclusion of the ES
Traffic and transport (Volume 3, Chapter 7 (APP-108))	No new projects or projects that have been updated were screened into the CEA for Traffic and transport. As such, no assessment for the cumulative impacts of those projects, new or updated, has been undertaken. There is no effect on the conclusions of the Environmental Statement CEA due to no projects being screened in.	No change to the conclusions of the Environmental Statement
Noise and vibration (Volume 3, Chapter 8 (APP-117))	No new projects or projects that have been updated were screened into the CEA for Noise and vibration. As such, no assessment for the cumulative impacts of those projects, new or updated, has been undertaken. There is no effect on the conclusions of the Environmental Statement CEA due to no projects being screened in.	No change to the conclusions of the Environmental Statement
Air Quality (Volume 3, Chapter 9 (APP-121))	No new projects or projects that have been updated were screened into the CEA for Air Quality. As such, no assessment for the cumulative impacts of those projects, new or updated, has been undertaken. There is no effect on the conclusions of the Environmental Statement CEA due to no projects being screened in.	No change to the conclusions of the Environmental Statement
Landscape and visual resources (Volume 3, Chapter 10 (APP-123))	No new projects or projects that have been updated were screened into the CEA for Landscape and visual resources. As such, no assessment for the cumulative impacts of those projects, new or updated, has been undertaken. There is no effect on the conclusions of the Environmental Statement CEA due to no projects being screened in.	No change to the conclusions of the Environmental Statement
Aviation and Radar (Volume 3, Chapter 11 (APP-130))	No new projects or projects that have been updated were screened into the CEA for Aviation and Radar. As such, no assessment for the cumulative impacts of those projects, new or updated, has been undertaken. There is no effect on the conclusions of the Environmental Statement CEA due to no projects being screened in.	No change to the conclusions of the Environmental Statement
Climate change (Volume 4, Chapter 1 (APP-138))	No new projects or projects that have been updated were screened into the CEA for Climate change. As such, no assessment for the cumulative impacts of those projects, new or updated, has been undertaken. There is no effect on the conclusions of the Environmental Statement CEA due to no projects being screened in.	No change to the conclusions of the Environmental Statement
Inter-relationships (Volume 4, Chapter 3 (APP-143))	No new projects or projects that have been updated were screened into the CEA for Inter-relationships. As such, no assessment for the cumulative impacts of those projects, new or updated, has been undertaken. There is no effect on the conclusions of the Environmental Statement CEA due to no projects being screened in.	No change to the conclusions of the Environmental Statement

1.5 Conclusions

- 1.5.1.1 This document has presented a review of the CEA and in-combination assessments presented in the Transmission Assets application documents, published in October 2024. This review has considered all relevant known projects that have been published up to 22 May 2025.
- 1.5.1.2 The Applicants have undertaken a review of updated project and any new project information, including reviewing applicable Environmental Statements, scoping reports and application documents, to identify if these projects could result in a change to the conclusions of the CEA and in-combination assessments presented in the Transmission Assets application. For all of the projects reviewed, there is/no potential for new cumulative effects to arise or an increase in cumulative effects for each of the topics considered and the conclusions of the Transmission Assets CEA and in-combination assessments therefore remain unchanged.

1.6 References

ERM (2024) Area 457 Environmental Statement, Case ref: MLA/2025/00017, Available at: https://marinelicensing.marinemanagement.org.uk/mmofox5/fox/live/MMO_PUBLIC_REGISTER, Accessed: May 2025

The Crown Estate and MPA Marine Aggregates (2023) The area involved – 25th annual report, Available at: <https://www.thecrownestate.co.uk/media/4242/the-area-involved-24th-annual-report.pdf>, Accessed: May 2025

The Planning Inspectorate (2024) Nationally Significant Infrastructure Projects: Advice on Cumulative Effects Assessment. Available: <https://www.gov.uk/guidance/nationally-significant-infrastructure-projects-advice-on-cumulative-effects-assessment>. Accessed: October 2024.